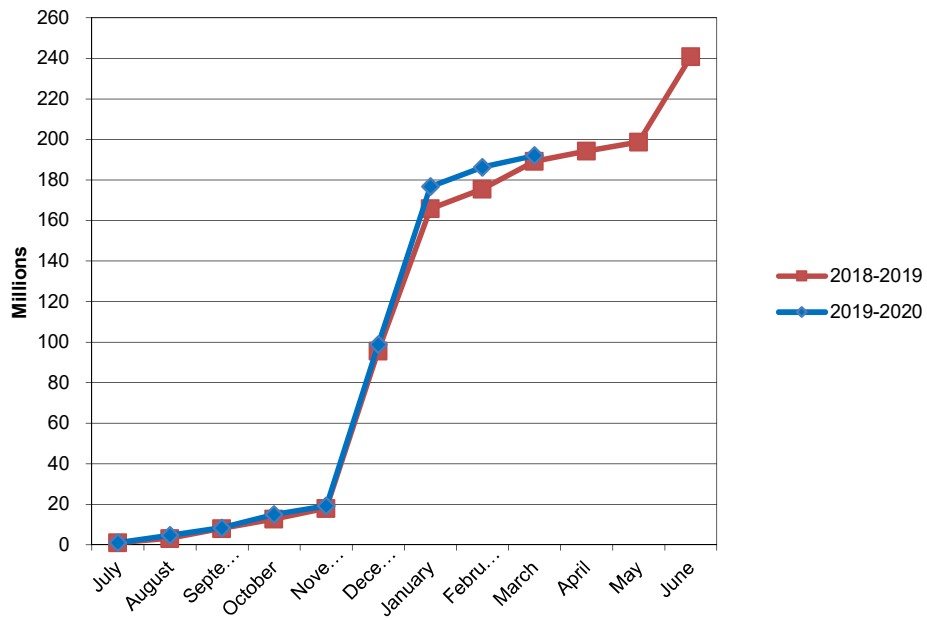
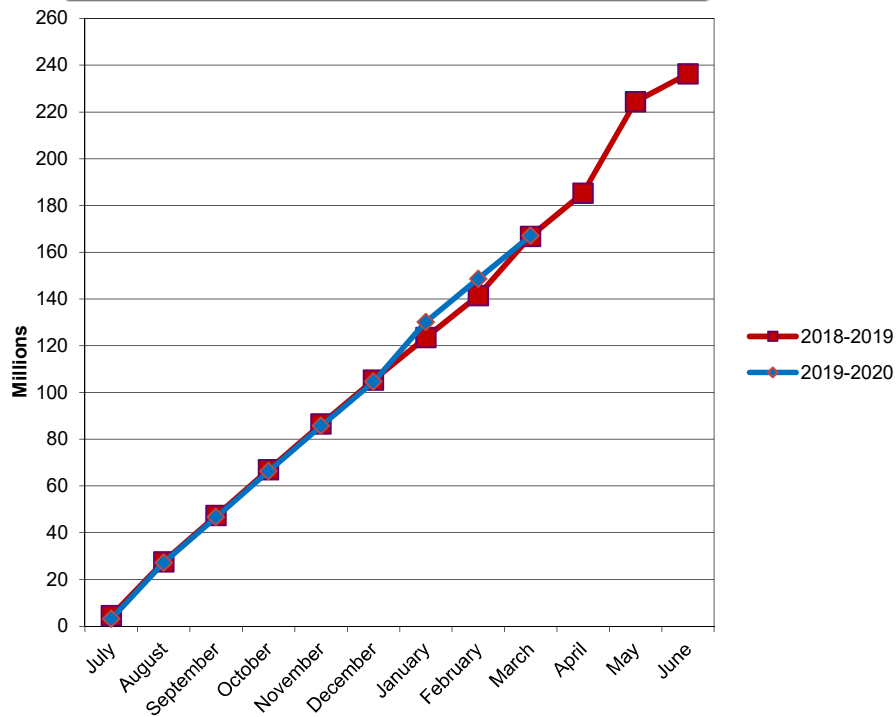


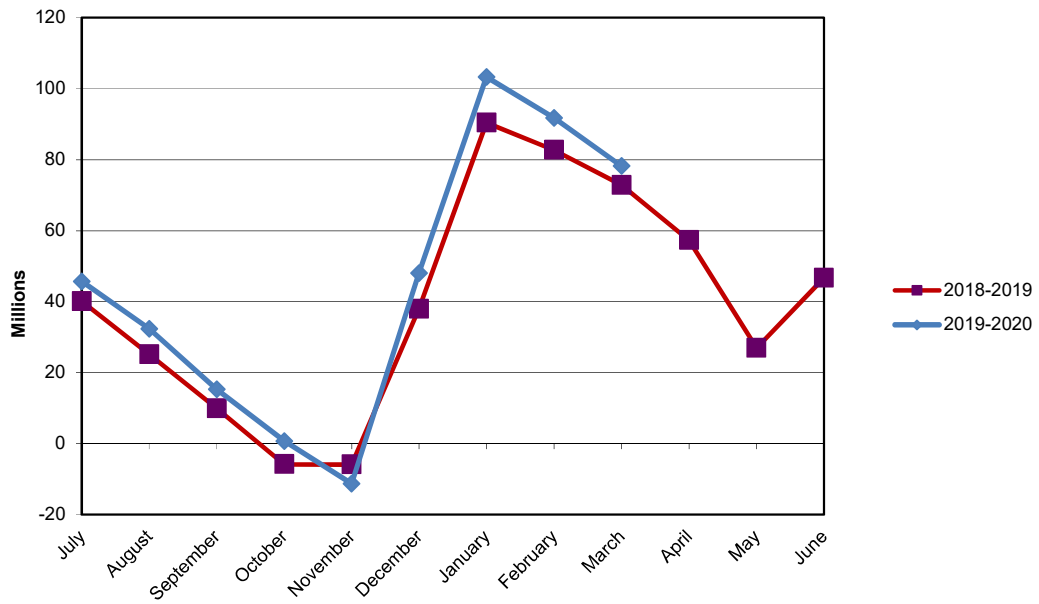
## PARKWAY SCHOOL DISTRICT ACTUAL OPERATING REVENUE



## PARKWAY SCHOOL DISTRICT ACTUAL OPERATING EXPENDITURES



# PARKWAY SCHOOL DISTRICT OPERATING FUND CASH AND INVESTMENTS





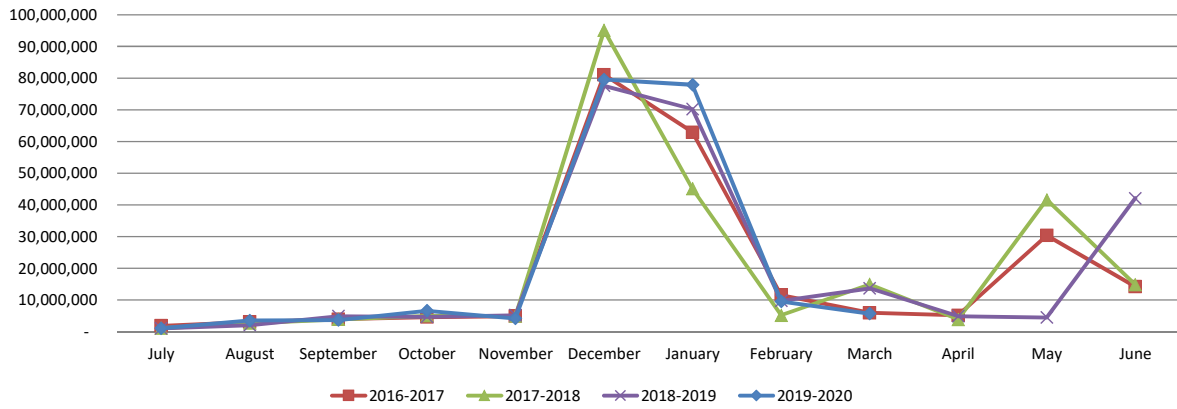
**PARKWAY**SCHOOLS

HIGHER EXPECTATIONS. BRIGHTER FUTURES.

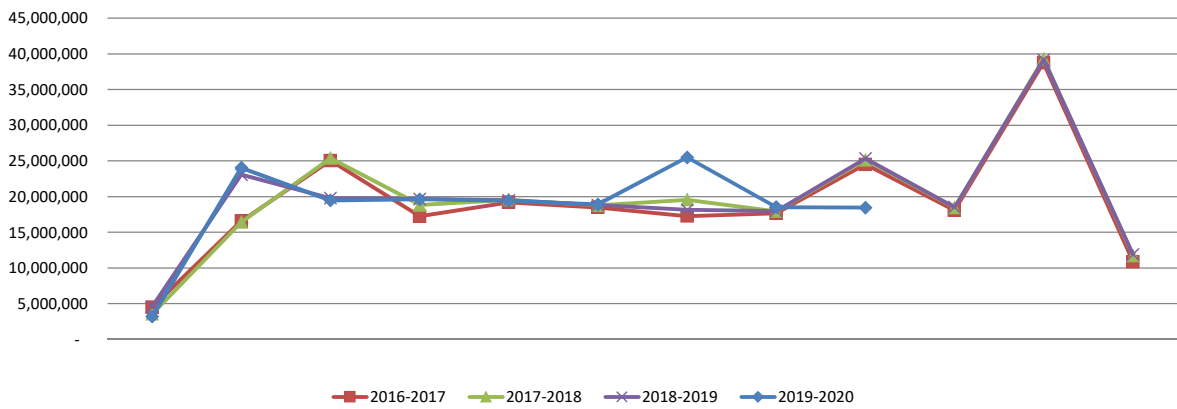
# Financial Statements

*Date: March 2020*

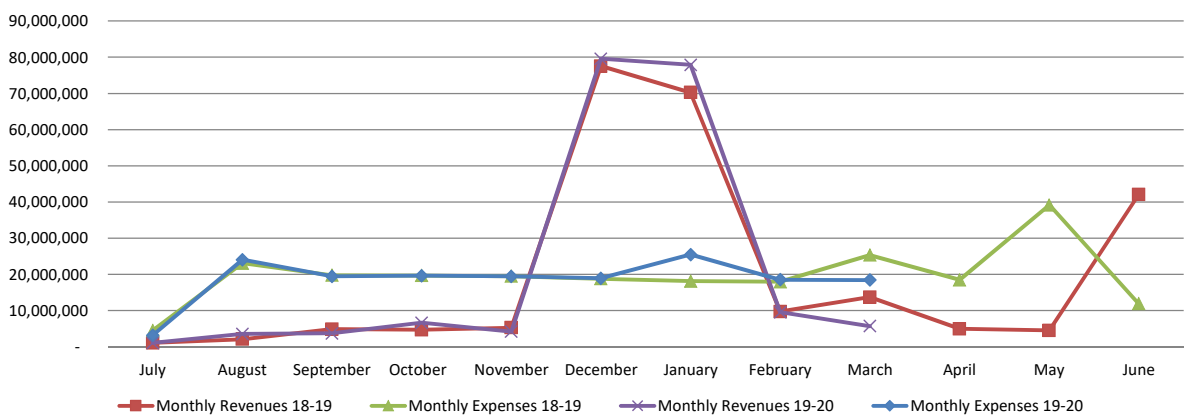
### Operating Revenue Collection by Month



### Expenses by Month



### Monthly Revenues vs Monthly Expenses



**Parkway School District  
Recapitulation of Funds  
Budget 2019-2020 With Restatement of Opening Balances**

FY2020 Full Year Projection

	<b>Operating</b>	<b>Debt Service</b>	<b>Capital Projects</b>	<b>2014 Bond Issue</b>	<b>2018 Bond Issue</b>	<b>All Funds</b>
Beginning Fund Balance	48,429,219	36,159,219	9,572,874	1,695,162	54,457,598	150,314,072
Revenues	245,728,038	25,561,295	7,718,262	10,000	500,000	279,517,595
Expenses	241,685,857	53,117,783	5,775,243	1,705,162	35,000,000	337,284,045
Ending Fund Balance	52,471,400	8,602,731	11,515,893	-	19,957,598	92,547,622

ACTUAL FY20 THROUGH 3/31/20

	<b>Operating</b>	<b>Debt Service</b>	<b>Capital Projects</b>	<b>2014 Bond Issue</b>	<b>2018 Bond Issue</b>	<b>All Funds</b>
Beginning Fund Balance	48,429,219	36,159,219	9,572,874	1,695,162	54,457,598	150,314,072
Revenues	191,954,538	22,105,804	6,366,584	21,922	712,064	221,160,912
Expenses	167,069,400	50,899,843	3,407,930	1,165,810	17,922,792	240,465,775
Transfers	-	-	-	-	-	-
Ending Fund Balance	73,314,357	7,365,180	12,531,528	551,274	37,246,870	131,009,209

ACTUAL FY19 THROUGH 3/31/20

	<b>Operating</b>	<b>Debt Service</b>	<b>Capital Projects</b>	<b>2014 Bond Issue</b>	<b>2018 Bond Issue</b>	<b>All Funds</b>
Beginning Fund Balance	46,492,486	36,717,985	2,253,613	17,496,421	-	102,960,505
Revenues	189,238,856	19,641,253	6,265,690	157,179	1,100,000	216,402,978
Expenses	166,772,668	23,111,434	1,830,217	14,339,932	232,984	206,287,235
Transfers	-	-	-	-	-	-
Ending Fund Balance	68,958,674	33,247,804	6,689,086	3,313,668	867,016	113,076,248

**PARKWAY SCHOOL DISTRICT  
ACCUAL BALANCE SHEET  
March 31, 2020**

	<b>TOTAL- ALL FUNDS 3/31/2020</b>	<b>TOTAL- ALL FUNDS 3/31/2019</b>
<b>ASSETS</b>		
Cash & Investments	\$ 149,800,451	131,230,629
Accounts Receivable	172,120	203,461
Inventories	704,734	793,483
Prepaid Expenses	1,672,006	1,692,569
Land	3,457,837	3,457,837
Land Improvements	15,628,730	17,072,007
Buildings/Improvements	200,708,807	163,361,983
Construction in Progress	21,129,217	50,522,194
Equipment	12,077,431	12,674,728
<b>Total Assets</b>	<b>\$ 405,351,333</b>	<b>381,008,891</b>
<b>LIABILITIES &amp; FUND BALANCE</b>		
Accounts Payable - Operating Funds	\$ 1,415,007	895,832
Accounts Payable - Bond Issue Funds	10,098	-
Accounts Payable - Medical Fund	99,748	-
Wages, Payroll Taxes, and Benefits Payable	3,473,549	5,638,563
Bonds Payable	245,760,000	190,760,000
Interest Payable	2,860,637	2,578,845
Liability for Compensated Absences	1,135,584	1,502,251
Liability for Early Retirement	205,016	902,168
<b>Total Liabilities</b>	<b>\$ 254,959,134</b>	<b>202,277,659</b>
Bond Issue Fund Balance	37,798,144	4,180,684
Debt Service Fund Balance	7,365,180	33,247,804
Capital Projects Fund Balance	12,531,528	6,689,086
Equity in Fixed Assets less Long Term Liabilities	3,040,785	51,345,485
Medical Fund Balance	16,342,205	14,309,499
Operating Fund Balance	73,314,357	68,958,674
<b>Total Fund Balance</b>	<b>\$ 150,392,199</b>	<b>178,731,232</b>
<b>TOTAL LIABILITIES &amp; FUND BALANCE</b>	<b>\$ 405,351,333</b>	<b>381,008,891</b>

BREAKOUT OF CASH & INVESTMENT BALANCE

	<u>3/31/2020</u>	<u>3/31/2019</u>
MEDICAL FUND CASH	16,441,953	14,309,499
DEBT SERVICE FUND CASH	7,365,379	33,247,645
DEBT SERVICE FUND INVESTMENTS	306	143
BOND ISSUE FUND CASH	30,497,593	4,172,879
BOND ISSUE FUND INVESTMENTS	7,290,453	7,805
CAPITAL PROJECTS FUND CASH	10,006,528	6,663,222
OPERATING FUND CASH	16,260,204	72,829,436
OPERATING FUND INVESTMENTS	61,938,035	-
<b>TOTAL</b>	<b>149,800,451</b>	<b>131,230,629</b>

RESTRICTED RESERVE

	<u>3/31/2020</u>	<u>3/31/2019</u>
FOOD SERVICE	56,490	242,706
MEDICAL BENEFITS	16,342,205	14,309,499
STUDENT ACTIVITY	3,377,115	3,266,906
<b>TOTAL</b>	<b>19,775,810</b>	<b>17,819,111</b>

PARKWAY SCHOOL DISTRICT  
MODIFIED ACCRUAL REVENUE SCHEDULE  
TOTAL ALL FUNDS

	YEAR TO DATE 3/31/2020				YEAR TO DATE 3/31/2019			
	BUDGETED REVENUE	REVENUE REALIZED	% REALIZED	BALANCE TO BE REALIZED	REVENUE** 6/30/2018	REVENUE REALIZED	% REALIZED	BALANCE TO BE REALIZED
<b>LOCAL</b>								
Property Taxes	175,525,290	150,311,722	85.64%	25,213,568	171,474,393	142,556,444	83.14%	28,917,949
Delinquent Property Taxes	-	-	0.00%	-	(1,577,667)	-	0.00%	(1,577,667)
Sales Tax	16,060,010	9,367,010	58.33%	6,693,000	16,059,749	9,310,315	57.97%	6,749,434
M&M Surtax	4,653,273	3,653,032	78.50%	1,000,241	4,596,653	3,016,673	65.63%	1,579,980
Food Service	4,095,236	3,346,851	81.73%	748,385	4,016,924	3,280,756	81.67%	736,168
Other Local	9,511,065	3,067,014	32.25%	6,444,051	9,931,468	9,590,628	96.57%	340,840
VICC-VST Revenue	7,292,893	2,014,722	27.63%	5,278,171	8,651,877	2,538,621	29.34%	6,113,256
<b>TOTAL LOCAL</b>	<b>217,137,767</b>	<b>171,760,351</b>	<b>79.10%</b>	<b>45,377,416</b>	<b>213,153,397</b>	<b>170,293,437</b>	<b>79.89%</b>	<b>42,859,960</b>
<b>INTEREST</b>	<b>900,000</b>	<b>560,270</b>	<b>62.25%</b>	<b>339,730</b>	<b>1,318,398</b>	<b>824,883</b>	<b>62.57%</b>	<b>493,515</b>
<b>COUNTY</b>	<b>3,987,879</b>	<b>4,046,662</b>	<b>101.47%</b>	<b>(58,783)</b>	<b>3,423,638</b>	<b>3,316,254</b>	<b>96.86%</b>	<b>107,384</b>
<b>STATE</b>								
Basic Formula	2,528,168	1,806,172	71.44%	721,996	2,411,230	1,826,362	75.74%	584,868
Classroom Trust	6,435,088	4,741,495	73.68%	1,693,593	6,436,222	4,190,466	65.11%	2,245,756
Transportation	1,394,002	1,062,384	76.21%	331,618	1,230,079	923,737	75.10%	306,342
Other State	1,602,279	551,243	34.40%	1,051,036	1,805,336	1,635,519	90.59%	169,817
<b>TOTAL STATE</b>	<b>11,959,537</b>	<b>8,161,294</b>	<b>68.24%</b>	<b>3,798,243</b>	<b>11,882,867</b>	<b>8,576,084</b>	<b>72.17%</b>	<b>3,306,783</b>
<b>FEDERAL</b>								
Federal Food Service	2,125,276	1,439,471	67.73%	685,805	2,108,374	1,454,683	69.00%	653,691
Other Federal Entitlements	2,876,271	1,707,949	59.38%	1,168,322	2,703,424	1,216,601	45.00%	1,486,823
<b>TOTAL FEDERAL</b>	<b>5,001,547</b>	<b>3,147,420</b>	<b>62.93%</b>	<b>1,854,127</b>	<b>4,811,798</b>	<b>2,671,284</b>	<b>55.52%</b>	<b>2,140,514</b>
<b>OTHER FINANCING SOURCES</b>								
Transportation Reimbursement	3,108,435	1,625,706	52.30%	1,482,729	2,638,360	1,096,278	41.55%	1,542,082
Tuition From Other Districts	90,000	30,311	33.68%	59,689	118,997	48,416	40.69%	70,581
Sale Of Property	42,873	4,440	10.36%	38,433	42,873	15,330	35.76%	27,543
<b>TOTAL OTHER FINANCING SOURCES</b>	<b>3,241,308</b>	<b>1,660,457</b>	<b>51.23%</b>	<b>1,580,851</b>	<b>2,800,230</b>	<b>1,160,024</b>	<b>41.43%</b>	<b>1,640,206</b>
<b>SUB-TOTAL OPERATING REVENUE</b>	<b>242,228,038</b>	<b>189,336,454</b>	<b>78.16%</b>	<b>52,891,584</b>	<b>237,390,328</b>	<b>186,841,966</b>	<b>78.71%</b>	<b>50,548,362</b>
<b>STUDENT ACTIVITIES</b>	<b>3,500,000</b>	<b>2,618,084</b>	<b>74.80%</b>	<b>881,916</b>	<b>3,387,145</b>	<b>2,396,890</b>	<b>70.76%</b>	<b>990,255</b>
<b>TOTAL OPERATING REVENUE</b>	<b>245,728,038</b>	<b>191,954,538</b>	<b>78.12%</b>	<b>53,773,500</b>	<b>240,777,473</b>	<b>189,238,856</b>	<b>78.59%</b>	<b>51,538,617</b>
<b>NON-OPERATING REVENUES</b>								
2019 Bond Issue	-	-	0.00%	-	55,000,000	1,100,000	2.00%	53,900,000
2019 Bond Issue Interest/Premium	500,000	712,064	0.00%	(212,064)	5,195,531	-	0.00%	5,195,531
2014 Bond Issue Interest/Premium	10,000	21,922	0.00%	(11,922)	199,786	157,179	78.67%	42,607
Debt Service Property Taxes	24,366,081	20,857,819	85.60%	3,508,262	22,420,935	18,639,802	83.14%	3,781,133
Debt Service Delinquent Prop. Taxes	-	-	0.00%	-	(206,286)	-	0.00%	(206,286)
Debt Service Interest/Premium	505,192	517,185	102.37%	(11,993)	747,336	385,565	51.59%	361,771
Debt Service County Revenue	690,022	730,800	105.91%	(40,778)	641,617	615,886	95.99%	25,731
Cap. Projects Property Taxes	6,593,760	5,649,000	85.67%	944,760	6,849,824	5,694,650	0.00%	1,155,174
Cap. Projects Delinquent Prop. Taxes	-	-	0.00%	-	(63,022)	-	100.00%	(63,022)
Capital Projects Other	824,002	492,500	59.77%	(192,500)	928,348	279,481	0.00%	648,867
Marketing Agreement	300,000	224,167	74.72%	-	317,917	291,250	91.61%	26,667
Capital Interest/Premium	500	917	183.40%	(417)	1,222	309	25.29%	913
<b>TOTAL ALL REVENUE SOURCES</b>	<b>279,517,595</b>	<b>221,160,912</b>	<b>79.12%</b>	<b>58,356,683</b>	<b>332,810,681</b>	<b>216,402,978</b>	<b>65.02%</b>	<b>116,407,703</b>



EXPENDITURE SUMMARY BY OBJECT  
TOTAL ALL FUNDS  
MARCH 31, 2020

	BUDGET	ACTUAL	%	ACTUAL**	ACTUAL	%	CHANGE FROM PRIOR YEAR	
	2019-2020	EXPENDITURES YTD 3/31/2020	EXPENDED 2019-2020	EXPENDITURES 06/30/2019	EXPENDITURES YTD 3/31/2019	EXPENDED 2018-2019	\$	%
<b>SALARIES</b>								
Certificated	102,864,414	69,394,691	67.46%	100,050,706	68,417,662	68.38%	977,029	-0.92%
Classified	38,746,304	27,268,989	70.38%	37,875,070	27,674,763	73.07%	(405,774)	-2.69%
Administrative	12,497,566	9,788,238	78.32%	12,128,795	9,325,682	76.89%	462,556	1.43%
<b>TOTAL SALARIES</b>	<b>154,108,284</b>	<b>106,451,918</b>	<b>69.08%</b>	<b>150,054,571</b>	<b>105,418,107</b>	<b>70.25%</b>	<b>1,033,811</b>	<b>-1.18%</b>
<b>BENEFITS</b>								
Retirement, Social Security and Medicare	26,480,541	17,971,162	67.87%	25,367,886	17,761,215	70.01%	209,947	-2.15%
Medical, Dental and Life Insurance	27,723,058	18,475,402	66.64%	28,044,920	19,610,547	69.93%	(1,135,145)	-3.28%
<b>TOTAL BENEFITS</b>	<b>54,203,599</b>	<b>36,446,564</b>	<b>67.24%</b>	<b>53,412,806</b>	<b>37,371,762</b>	<b>69.97%</b>	<b>(925,198)</b>	<b>-2.73%</b>
<b>PURCHASED SERVICES</b>								
Substitute Services	2,955,354	2,021,230	68.39%	2,695,542	1,914,543	71.03%	106,687	-2.63%
Tuition	192,882	45,857	23.77%	173,834	233,785	134.49%	(187,928)	-110.71%
Professional Services	2,934,616	1,422,157	48.46%	2,172,772	1,613,825	74.27%	(191,668)	-25.81%
Audit	41,000	31,500	76.83%	33,800	33,800	100.00%	(2,300)	-23.17%
Technical Services	92,400	57,807	62.56%	113,782	96,001	84.37%	(38,194)	-21.81%
Legal Services	215,000	164,030	76.29%	179,905	123,303	68.54%	40,727	7.76%
Property Services	3,264,849	2,049,834	62.78%	2,198,123	1,549,095	70.47%	500,739	-7.69%
Travel & Contracted Trans.	1,751,187	1,302,043	74.35%	1,631,375	1,015,289	62.24%	286,754	12.12%
Property Insurance	879,000	858,670	97.69%	864,490	823,526	95.26%	35,144	2.43%
Liability Insurance	874,095	891,539	102.00%	845,825	837,432	99.01%	54,107	2.99%
Other Purchased Services	1,918,704	1,004,051	52.33%	1,477,766	1,036,676	70.15%	(32,625)	-17.82%
<b>TOTAL PURCHASED SERVICES</b>	<b>15,119,087</b>	<b>9,848,718</b>	<b>65.14%</b>	<b>12,387,214</b>	<b>9,277,275</b>	<b>74.89%</b>	<b>571,443</b>	<b>-9.75%</b>
<b>CONSUMABLES</b>								
General Supplies	3,700,000	2,445,886	66.11%	3,670,818	2,362,332	64.35%	83,554	1.75%
Instructional Supplies	7,434,142	5,169,300	69.53%	6,634,988	5,281,145	79.60%	(111,845)	-10.06%
Library Books	363,330	285,767	78.65%	298,061	223,679	75.04%	62,088	3.61%
Gasoline/Diesel	658,200	384,639	58.44%	652,224	460,648	70.63%	(76,009)	-12.19%
Energy Services	3,915,000	2,193,402	56.03%	3,576,865	2,519,114	70.43%	(325,712)	-14.40%
Food Service Supplies	2,643,000	1,903,546	72.02%	2,393,954	1,983,010	82.83%	(79,464)	-10.81%
<b>TOTAL CONSUMABLES</b>	<b>18,713,672</b>	<b>12,382,540</b>	<b>66.17%</b>	<b>17,226,910</b>	<b>12,829,928</b>	<b>74.48%</b>	<b>(447,388)</b>	<b>-8.31%</b>
<b>OPERATING LEASES</b>	<b>41,215</b>	<b>2,465</b>	<b>5.98%</b>	<b>41,215</b>	<b>41,215</b>	<b>100.00%</b>	<b>(38,750)</b>	<b>-94.02%</b>
<b>SUBTOTAL OPERATING EXPENSES</b>	<b>242,185,857</b>	<b>165,132,205</b>	<b>68.18%</b>	<b>233,122,716</b>	<b>164,938,287</b>	<b>70.75%</b>	<b>193,918</b>	<b>-2.57%</b>
<b>STUDENT ACTIVITIES</b>	<b>3,500,000</b>	<b>1,937,195</b>	<b>55.35%</b>	<b>3,218,024</b>	<b>1,834,381</b>	<b>57.00%</b>	<b>102,814</b>	<b>-1.65%</b>
<b>ANTICIPATED EXPENDITURE SAVINGS</b>	<b>(4,000,000)</b>	<b>-</b>	<b>0.00%</b>	<b>-</b>	<b>-</b>	<b>0.00%</b>	<b>-</b>	<b>0.00%</b>
<b>TOTAL OPERATING EXPENSES</b>	<b>241,685,857</b>	<b>167,069,400</b>	<b>69.13%</b>	<b>236,340,740</b>	<b>166,772,668</b>	<b>70.56%</b>	<b>296,732</b>	<b>-1.44%</b>
<b>CAPITAL OUTLAY - NON BOND EXPENSES</b>								
Land Improvement	50,000	22,255	44.51%	34,576	25,841	74.74%	(3,586)	-30.23%
Building Alterations	800,000	301,175	37.65%	641,821	(182,069)	-28.37%	483,244	66.01%
General Equipment	946,262	671,808	71.00%	434,346	234,927	54.09%	436,881	16.91%
Instructional Equipment	1,000,000	67,527	6.75%	278,826	100,271	35.96%	(32,744)	-29.21%
Technology Equipment	1,000,000	853,894	85.39%	172,430	153,870	89.24%	700,024	-3.85%
Student Activity	220,000	134,201	61.00%	161,507	126,030	78.03%	(65,581)	-17.03%
Vehicles	230,000	84,272	36.64%	149,853	149,853	100.00%	(53,581)	-63.36%
School Buses	1,200,000	1,063,244	88.60%	1,010,196	1,010,196	100.00%	53,048	-11.40%
<b>TOTAL CAPITAL OUTLAY</b>	<b>5,446,262</b>	<b>3,198,376</b>	<b>58.73%</b>	<b>2,883,555</b>	<b>1,618,919</b>	<b>56.14%</b>	<b>1,579,457</b>	<b>2.58%</b>
<b>2014 BOND ISSUE EXPENDITURES</b>	<b>1,705,162</b>	<b>1,165,810</b>	<b>68.37%</b>	<b>16,001,045</b>	<b>14,339,932</b>	<b>89.62%</b>	<b>(13,174,122)</b>	<b>-21.25%</b>
<b>2018 BOND ISSUE EXPENDITURES</b>	<b>35,000,000</b>	<b>17,922,792</b>	<b>51.21%</b>	<b>5,737,933</b>	<b>232,984</b>	<b>0.00%</b>	<b>17,689,808</b>	<b>51.21%</b>
<b>CAPITAL FUND - BUS LEASES</b>	<b>328,981</b>	<b>209,554</b>	<b>63.70%</b>	<b>331,473</b>	<b>211,298</b>	<b>63.75%</b>	<b>(1,744)</b>	<b>-0.05%</b>
<b>DEBT SERVICE - GO BONDS</b>	<b>53,117,783</b>	<b>50,899,843</b>	<b>95.82%</b>	<b>24,162,368</b>	<b>23,111,434</b>	<b>95.65%</b>	<b>27,788,409</b>	<b>0.17%</b>
<b>GRAND TOTAL EXPENSES</b>	<b>337,284,045</b>	<b>240,465,775</b>	<b>71.29%</b>	<b>285,457,114</b>	<b>206,287,235</b>	<b>72.27%</b>	<b>34,178,540</b>	<b>-0.97%</b>

**Parkway School District  
Building Location Recap Report**

Fiscal Year 2020 Through Period 9    Run Date: 04-06-2020 @ 10:38:56

	<b>Budget</b>	<b>Expended</b>	<b>Encumbrances</b>	<b>Unexpended</b>
FERN RIDGE HIGH	16,400.00	8,560.34	1,410.69	6,428.97
CENTRAL HIGH	384,640.00	212,016.08	13,372.86	159,251.06
NORTH HIGH	288,129.00	156,123.16	26,197.25	105,808.59
WEST HIGH	323,928.00	209,548.87	33,628.36	80,750.77
SOUTH HIGH	487,828.00	244,733.17	12,016.37	231,078.46
SOUTHWEST MIDDLE	126,923.00	85,090.88	4,019.86	37,812.26
CENTRAL MIDDLE	202,036.00	103,328.15	4,720.95	93,986.90
NORTHEAST MIDDLE	163,183.00	75,045.00	15,423.94	72,714.06
SOUTH MIDDLE	137,365.00	48,173.55	931.68	88,259.77
WEST MIDDLE	203,650.00	125,563.74	11,027.77	67,058.49
BARRETS ELEM.	72,791.00	31,421.31	1,009.74	40,359.95
BELLERIVE ELEM.	72,633.00	36,633.44	1,928.49	34,071.07
CARMAN TRAILS ELEM.	76,593.00	43,759.76	4,146.50	28,686.74
CLAYMONT ELEM.	72,898.00	48,502.99	1,060.20	23,334.81
CRAIG ELEM.	69,523.00	54,650.78	7,072.71	7,799.51
GREEN TRAILS ELEM.	59,782.00	30,588.95	344.23	28,848.82
HANNA WOODS ELEM.	64,833.00	56,100.68	2,227.58	6,504.74
HENRY ELEM.	118,736.00	72,880.15	16,422.78	29,433.07
HIGHCROFT ELEM.	60,141.00	37,792.53	1,413.12	20,935.35
MASON RIDGE ELEM.	74,493.00	41,889.69	675.96	31,927.35
MCKELVEY ELEM.	124,103.00	54,752.08	3,057.91	66,293.01
OAK BROOK ELEM.	86,474.00	59,034.49	2,476.70	24,962.81
PIERREMONT ELEM.	91,890.00	50,814.73	381.32	40,693.95
RIVER BEND ELEM.	69,354.00	49,836.37	232.43	19,285.20
ROSS ELEM.	55,944.00	37,788.17	0.00	18,155.83
SORRENTO SPRINGS ELEM.	49,879.00	24,472.10	2,695.66	22,711.24
SHENANDOAH VALLEY ELEM.	93,811.00	55,431.32	9,657.61	28,722.07
WREN HOLLOW ELEM.	65,925.00	50,386.72	3,361.21	12,177.07
<b>Grand Total for Funds 10-12</b>	<b>3,627,411.00</b>	<b>2,009,769.94</b>	<b>158,645.06</b>	<b>1,458,996.00</b>
<b>Grand Total for Fund 20</b>	<b>3,203.00</b>	<b>3,899.90</b>	<b>0.00</b>	<b>-696.90</b>
<b>Grand Total for Fund 30</b>	<b>0.00</b>	<b>0.00</b>	<b>0.00</b>	<b>0.00</b>
<b>Grand Total for Funds 40-41</b>	<b>83,271.00</b>	<b>91,249.36</b>	<b>22,268.82</b>	<b>-30,247.18</b>
<b>Grand Total All</b>	<b>3,713,885.00</b>	<b>2,104,919.20</b>	<b>180,913.88</b>	<b>1,428,051.92</b>

## Parkway School District

Fiscal Year 2020 Through Period 9    Run Date: 04-06-2020 @ 10:40:13

	Budget	Expended	Encumbrances	Unexpended
SPECIAL READING	16,064.00	12,867.67	776.76	2,419.57
COMM ARTS	227,532.00	105,601.35	2,990.93	118,939.72
MATHEMATICS	88,228.00	46,487.58	7,884.67	33,855.75
FINE ARTS	397,680.00	269,542.81	36,120.61	92,016.58
PHYSICAL EDUCATION	62,812.00	40,709.40	5,328.42	16,774.18
SCIENCE	123,993.00	70,191.15	4,296.65	49,505.20
SOCIAL STUDIES	120,154.00	65,562.57	4,390.05	50,201.38
INSTRUCTIONAL TECHNOLOGY	105,887.00	61,359.83	1,739.00	42,788.17
GUIDANCE	30,128.00	15,285.59	322.49	14,519.92
ART	141,339.00	112,953.34	9,427.02	18,958.64
BLDG ADMIN SERVICES	2,155,207.00	1,149,726.36	92,698.74	912,781.90
AUDIO VISUAL SERVICES	8,890.00	4,182.06	196.73	4,511.21
BUSINESS EDUCATION	48,322.00	19,577.66	1,329.72	27,414.62
MODERN CLASSICAL LANG	49,254.00	34,206.42	423.20	14,624.38
FAMILY AND CONSUMER SC	73,412.00	34,205.11	0.00	39,206.89
INDUSTRIAL ARTS	55,023.00	27,235.17	14,241.06	13,546.77
STUDENT BODY ACT	247,949.00	162,750.05	27,309.85	57,889.10
COOP VOC ED	285,119.00	99,282.89	115,669.63	70,166.48
UNIFIED STUDIES	2,580.00	2,436.88	200.00	-56.88
SPEECH	24,613.00	13,735.76	11.90	10,865.34
LIBRARY SVCS	84,634.00	40,883.87	1,809.58	41,940.55
HEALTH ED	8,368.00	2,892.54	0.00	5,475.46
EEE CAMP	143,238.00	56,267.52	918.72	86,051.76
GIFTED EDUCATION	218,599.00	157,058.19	299.40	61,241.41
DRUG FREE SCHOOL	134,777.00	93,066.05	440.04	41,270.91
SUB RELEASE DAYS	1,000.00	0.00	0.00	1,000.00
ADC	764,833.00	592,099.85	1,232.16	171,500.99
SUMMER SCHOOL	1,509,408.00	122,256.89	14,700.00	1,372,451.11
INSTRUCTIONAL STAFFING	136,784,993.00	92,628,407.81	0.00	44,156,585.19
BLDG LEVEL STAFFING	17,079,372.00	12,658,341.83	0.00	4,421,030.17
SPECIAL SERVICES	411,258.00	242,242.52	420.80	168,594.68
ESOL	27,305.00	21,361.63	2,935.27	3,008.10
ATHLETICS	1,260,621.00	1,163,958.06	262,165.52	-165,502.58
ADULT BASIC EDUCATION	1,698,775.00	1,088,740.57	17,692.97	592,341.46
SWIM CLUB	819,060.00	495,460.09	25,692.20	297,907.71
EARLY CHILDHOOD	1,786,490.00	1,305,329.04	3,406.13	477,754.83
PRESCHOOLS	2,351,726.00	1,758,935.52	39.53	592,750.95
PARK ROCK COMM ED	38,065.00	33,293.18	0.00	4,771.82
STUDENT SERVICES	137,614.00	151,352.45	0.00	-13,738.45

## Parkway School District

Fiscal Year 2020 Through Period 9    Run Date: 04-06-2020 @ 10:40:13

<b>PUPIL PERSONNEL</b>	2,106,091.00	1,373,236.23	58,664.41	674,190.36
<b>HEALTH SERVICES</b>	2,928,845.00	1,947,879.96	24,386.25	956,578.79
<b>GUIDANCE AND COUNSELING</b>	214,773.00	152,788.27	2,400.00	59,584.73
<b>SEB SUPPORT</b>	77,671.00	21,458.41	0.00	56,212.59
<b>TEACH LEARN ACCOUNTABILITY</b>	4,271,988.00	2,710,364.07	264,965.40	1,296,658.53
<b>PROFESSIONAL LEARNING</b>	1,373,762.00	649,040.81	25,967.00	698,754.19
<b>READING DIAGNOSTICS</b>	255,699.00	121,977.07	2,000.00	131,721.93
<b>EVALUATION</b>	271,913.00	209,144.16	286.72	62,482.12
<b>INSTRUC TECH LIBRARY MEDIA</b>	1,168,077.00	862,211.14	30,053.70	275,812.16
<b>STUDENT ASSESSMENT</b>	348,742.00	148,785.80	80,407.60	119,548.60
<b>PROGRESS MONITORING</b>	537,174.00	201,887.47	0.00	335,286.53
<b>BOARD OF EDUCATION</b>	167,894.00	30,286.59	0.00	137,607.41
<b>SUPERINTENDENT</b>	502,126.00	348,677.58	0.00	153,448.42
<b>DISTRICT DUES</b>	164,700.00	163,001.61	0.00	1,698.39
<b>LEGAL SERVICES</b>	215,000.00	164,030.38	28,584.36	22,385.26
<b>DEPUTY SUPERINTENDENT</b>	410,479.00	240,169.47	0.00	170,309.53
<b>ASST SUPER OF STUDENT SERVICES</b>	316,745.00	208,085.20	3,985.61	104,674.19
<b>CHIEF FINANCIAL OFFICER</b>	326,659.00	252,219.14	154.49	74,285.37
<b>COMMUNICATIONS</b>	1,072,382.00	744,864.73	38,668.52	288,848.75
<b>SAFETY SECURITY</b>	1,425,675.00	789,118.80	315,339.07	321,217.13
<b>SPECIAL PROJECTS</b>	204,854.00	59,363.12	0.00	145,490.88
<b>FINANCE</b>	1,190,495.00	838,055.85	3,430.57	349,008.58
<b>INTERNAL EQUIP FIN</b>	756,807.00	324,352.12	210,104.26	222,350.62
<b>RISK MGMT</b>	2,347,095.00	1,973,573.08	30,807.75	342,714.17
<b>FOOD SERVICES</b>	7,056,226.00	4,931,662.84	940,369.68	1,184,193.48
<b>PURCHASING</b>	1,118,292.00	1,023,035.60	424.86	94,831.54
<b>PRINT SHOP</b>	33,465.00	25,670.87	4,773.81	3,020.32
<b>SCHOOL STORES</b>	394,840.00	248,321.67	76,662.56	69,855.77
<b>WAREHOUSE</b>	1,019,159.00	586,718.57	2,516.28	429,924.15
<b>MAILROOM</b>	92,600.00	55,017.03	2,456.41	35,126.56
<b>TECHNOLOGY</b>	7,317,565.00	5,874,948.64	143,475.21	1,299,141.15
<b>HUMAN RESOURCES</b>	1,195,151.00	840,330.53	9,596.95	345,223.52
<b>TRANSPORTATION</b>	7,645,861.00	5,755,719.16	541,349.60	1,348,792.24
<b>SSD TRANSPORTATION</b>	2,091,374.00	1,574,650.87	0.00	516,723.13
<b>STUDENTS IN TRANSITION</b>	1,300,000.00	901,184.08	335,746.17	63,069.75
<b>FACILITY OPERATIONS</b>	8,534,797.00	5,580,774.55	160,863.39	2,793,159.06
<b>FACILITY MAINTENANCE</b>	5,172,485.00	3,625,693.60	765,968.06	780,823.34
<b>GROUNDS MAINTENANCE</b>	2,099,060.00	1,265,661.03	450,948.64	382,450.33
<b>PLANNING</b>	1,769,472.00	964,263.90	125,934.97	679,273.13
<b>ENVIRONMENTAL SVCS</b>	739,728.00	300,431.97	86,972.81	352,323.22
<b>FACILITY MANAGEMENT</b>	936,054.00	504,267.60	264,298.83	167,487.57

# Parkway School District

Fiscal Year 2020 Through Period 9 Run Date: 04-06-2020 @ 10:40:13

<b>SUSTAINABILITY</b>	5,107,910.00	3,016,522.45	1,493,976.97	597,410.58
<b>REBATE PROJECTS</b>	374,159.00	178,106.75	128,378.61	67,673.64
<b>2014 BOND</b>	3,000,000.00	1,165,809.49	439,825.42	1,394,365.09
<b>2018 BOND</b>	35,000,000.00	17,922,791.56	15,979,896.70	1,097,311.74
<b>DEBT SERVICE</b>	50,474,423.00	50,899,842.70	2,806.47	-428,226.17
<b>STATE GRANTS</b>	217,219.00	212,876.21	0.00	4,342.79
<b>FEDERAL GRANTS</b>	1,714,924.41	1,358,070.43	4,065.48	352,788.50
<b>LOCAL GRANTS</b>	120,991.69	88,169.60	0.00	32,822.09
<b>Grand Total for Funds 10-12</b>	<b>87,197,189.70</b>	<b>58,529,979.06</b>	<b>6,317,044.19</b>	<b>22,350,166.45</b>
<b>Grand Total for Fund 20</b>	<b>155,650,215.40</b>	<b>106,602,807.52</b>	<b>0.00</b>	<b>49,047,407.88</b>
<b>Grand Total for Fund 30</b>	<b>50,474,423.00</b>	<b>50,899,842.70</b>	<b>2,806.47</b>	<b>-428,226.17</b>
<b>Grand Total for Funds 40-41</b>	<b>8,383,896.00</b>	<b>4,439,539.18</b>	<b>1,438,875.98</b>	<b>3,602,792.58</b>
<b>Grand Total All</b>	<b>336,705,724.10</b>	<b>238,394,960.02</b>	<b>23,738,623.34</b>	<b>74,572,140.74</b>

**Parkway School District  
Program Budget - Programs Recap Report**

Fiscal Year 2020 Through Period 9    Run Date: 04-06-2020 @ 11:25:16

	<b>Budget</b>	<b>Expended</b>	<b>Encumbrances</b>	<b>NKNOWN</b>	<b>Unexpended</b>
<b>SPECIAL READING</b>	5,770.00	3,113.54	730.00	0.00	1,926.46
<b>COMM ARTS</b>	147,220.00	53,309.04	977.86	0.00	92,933.10
<b>MATHEMATICS</b>	68,259.00	39,144.72	7,884.67	0.00	21,229.61
<b>FINE ARTS</b>	373,144.00	254,412.10	33,870.16	0.00	84,861.74
<b>PHYSICAL EDUCATION</b>	43,481.00	24,161.98	2,515.12	0.00	16,803.90
<b>SCIENCE</b>	110,876.00	64,903.11	4,296.65	0.00	41,676.24
<b>SOCIAL STUDIES</b>	99,860.00	37,969.09	4,350.00	0.00	57,540.91
<b>INSTRUCTIONAL TECHNOLOGY</b>	52,832.00	27,674.06	1,739.00	0.00	23,418.94
<b>GUIDANCE</b>	23,112.00	9,524.52	322.49	0.00	13,264.99
<b>ART</b>	90,789.00	67,100.52	6,986.41	0.00	16,702.07
<b>BLDG ADMIN SERVICES</b>	1,401,328.00	689,198.12	53,138.54	0.00	658,991.34
<b>AUDIO VISUAL SERVICES</b>	8,590.00	4,182.06	196.73	0.00	4,211.21
<b>BUSINESS EDUCATION</b>	48,322.00	19,577.66	1,329.72	0.00	27,414.62
<b>MODERN CLASSICAL LANG</b>	49,254.00	34,206.42	423.20	0.00	14,624.38
<b>FAMILY AND CONSUMER SC</b>	73,412.00	34,205.11	0.00	0.00	39,206.89
<b>INDUSTRIAL ARTS</b>	55,023.00	27,235.17	14,241.06	0.00	13,546.77
<b>STUDENT BODY ACT</b>	247,949.00	162,750.05	27,309.85	0.00	57,889.10
<b>COOP VOC ED</b>	285,119.00	99,282.89	115,669.63	0.00	70,166.48
<b>UNIFIED STUDIES</b>	2,580.00	2,436.88	200.00	0.00	-56.88
<b>SPEECH</b>	24,613.00	13,735.76	11.90	0.00	10,865.34
<b>LIBRARY SVCS</b>	63,196.00	30,713.51	1,254.20	0.00	31,228.29
<b>HEALTH ED</b>	7,351.00	2,676.58	0.00	0.00	4,674.42
<b>EEE CAMP</b>	143,238.00	56,267.52	918.72	0.00	86,051.76
<b>GIFTED EDUCATION</b>	209,819.00	149,923.04	0.00	0.00	59,895.96
<b>DRUG FREE SCHOOL</b>	134,777.00	93,066.05	440.04	0.00	41,270.91
<b>ADC</b>	0.00	48.00	0.00	0.00	-48.00
<b>SUMMER SCHOOL</b>	0.00	510.00	0.00	0.00	-510.00
<b>INSTRUCTIONAL STAFFING</b>	130,270,209.00	90,309,420.01	0.00	0.00	39,960,788.99
<b>BLDG LEVEL STAFFING</b>	16,570,109.00	12,329,894.66	0.00	0.00	4,240,214.34
<b>SPECIAL SERVICES</b>	7,547.00	5,355.12	267.80	0.00	1,924.08
<b>ESOL</b>	1,601.00	16,688.94	0.00	0.00	-15,087.94
<b>ATHLETICS</b>	76,169.00	420,207.31	17,716.00	0.00	-361,754.31
<b>PARK ROCK COMM ED</b>	0.00	12,496.18	0.00	0.00	-12,496.18
<b>PUPIL PERSONNEL</b>	565,730.00	405,458.87	0.00	0.00	160,271.13
<b>HEALTH SERVICES</b>	2,105,055.00	1,489,603.48	0.00	0.00	615,451.52
<b>GUIDANCE AND COUNSELING</b>	14,397.00	20,470.11	0.00	0.00	-6,073.11

**Parkway School District  
Program Budget - Programs Recap Report**

Fiscal Year 2020 Through Period 9 Run Date: 04-06-2020 @ 11:25:16

	<b>Budget</b>	<b>Expended</b>	<b>Encumbrances</b>	<b>NKNOWN</b>	<b>Unexpended</b>
<b>TEACH LEARN ACCOUNTABILITY</b>	0.00	498,829.56	93,257.53	0.00	-592,087.09
<b>PROFESSIONAL LEARNING</b>	0.00	154,137.27	0.00	0.00	-154,137.27
<b>READING DIAGNOSTICS</b>	0.00	4,985.98	0.00	0.00	-4,985.98
<b>INSTRUC TECH LIBRARY MEDIA</b>	0.00	251,296.52	27,455.05	0.00	-278,751.57
<b>STUDENT ASSESSMENT</b>	0.00	3,968.00	0.00	0.00	-3,968.00
<b>SAFETY SECURITY</b>	6,752.00	5,970.27	0.00	0.00	781.73
<b>FOOD SERVICES</b>	2,956,868.00	2,165,198.66	0.00	0.00	791,669.34
<b>SCHOOL STORES</b>	22,000.00	20,107.89	74,225.06	0.00	-72,332.95
<b>TECHNOLOGY</b>	1,262,135.00	1,703,413.07	18,060.04	0.00	-459,338.11
<b>FACILITY OPERATIONS</b>	6,284,342.00	4,095,415.58	0.00	0.00	2,188,926.42
<b>PLANNING</b>	0.00	3,677.90	6,312.50	0.00	-9,990.40
<b>SUSTAINABLITY</b>	0.00	2,491,932.36	54,810.00	0.00	-2,546,742.36
<b>2014 BOND</b>	0.00	201,264.26	183,233.79	0.00	-384,498.05
<b>2018 BOND</b>	0.00	8,215,989.66	9,632,494.31	0.00	-17,848,483.97
<b>FEDERAL GRANTS</b>	903,785.40	1,029,549.13	849.48	0.00	-126,613.21
<b>LOCAL GRANTS</b>	0.00	239.40	0.00	0.00	-239.40
<b>Grand Total for Funds 10-12</b>	<b>25,258,881.00</b>	<b>21,293,753.10</b>	<b>542,030.71</b>	<b>0.00</b>	<b>3,423,097.19</b>
<b>Grand Total for Fund 20</b>	<b>139,493,178.40</b>	<b>97,656,918.90</b>	<b>0.00</b>	<b>0.00</b>	<b>41,836,259.50</b>
<b>Grand Total for Fund 30</b>	<b>0.00</b>	<b>0.00</b>	<b>0.00</b>	<b>0.00</b>	<b>0.00</b>
<b>Grand Total for Funds 40-41</b>	<b>64,554.00</b>	<b>690,236.03</b>	<b>212,962.49</b>	<b>0.00</b>	<b>-18,687,128.49</b>
<b>Grand Total All</b>	<b>164,816,613.40</b>	<b>127,856,897.69</b>	<b>10,387,487.51</b>	<b>0.00</b>	<b>26,572,228.20</b>

• **GLOSSARY**

ACCOUNTS PAYABLE - Unpaid amounts currently owed to vendors for goods and services provided.

ACCOUNTS RECEIVABLE - Revenues earned but not yet received by the District.

AMOUNT PROVIDED FOR BOND PRINCIPAL - Amount available to meet current and future bond payments.

AMOUNT TO BE PROVIDED FOR PRINCIPAL AND INTEREST - The amount of funds needed to repay remaining bonded indebtedness. This is a “memo type” entry and does not represent an actual accumulation of cash.

BONDS AND INTEREST PAYABLE - CURRENT - Amount of bond principal and interest payable in future years.

CONSTRUCTION IN PROGRESS - Amounts expended to date on construction projects not completed. When completed, this account is reduced by the total cost of the completed projects.

ENCUMBRANCES - Obligations in the form of purchase orders, contracts, salary commitments, etc. for which a budgeted appropriation has been made.

EQUITY IN GENERAL FIXED ASSETS - Represents the appropriation of funds over a number of years to acquire land, buildings / improvements, and equipment. It is an offset to the respective asset accounts.

FUND BALANCE - The excess of assets over liabilities, which represent the “net worth” of a fund.

FUNDS - The four basic funds and their purposes are:

Capital Projects (Building) - Only capital equipment and building additions / alterations can be charged to this fund. Primary sources of revenue are property / delinquent taxes, building leases, investment income and sale of bonds.

Debt Service - Bond principal, interest and fees associated with the issue and redemption of bonds are the only expenses chargeable to this fund. Primary sources of revenue are property / delinquent taxes and investment income.

General (Incidental) - Expenses not specifically chargeable to other funds are charged to this fund. Primary sources of revenue are property / delinquent taxes, sales tax, investment income, minimum guarantee, VST, textbook, transportation and food service.



Special Revenue (Teachers) - Only salaries for certificated personnel and the cost medical / dental / vision / life insurance can be charged to this fund. Primary sources of revenue are property / delinquent taxes, investment income, state utility tax, minimum guarantee and VST.

INVENTORIES - Value of consumables purchased for future use.

PREPAID EXPENSES - Services paid for in advance of use (e.g. insurance).

RESERVE - Portion of the fund balance which is segregated for a future use and, therefore, not available for future appropriation.

RESERVE FOR BUDGETED ENCUMBRANCE - Funds budgeted and encumbered but not yet spent.

RESTRICTED RESERVE - Balances in the General Fund or Capital Projects Fund restricted as to the use (e.g. future medical / dental benefits) or unspent bond issue funds.

UNREALIZED REVENUES - Revenues budgeted but not yet realized.

UNSPENT BUDGETED FUNDS - Funds budgeted but not expended or encumbered.



## FOR MONTH OF: MARCH – FY20

Attached is a list (alphabetical by vendor) of purchase orders and order for payments \$500 to \$15,000 and \$15,000 + which the administration has approved in accordance with Policy #DJEBP

Reports per DIC.BP

**ORDER FOR PAYMENT**

**\$500 - \$15,000**

**MARCH FY20**

<b>VENDOR NAME</b>	<b>OBJECT</b>	<b>DOCUMENT</b>	<b>AMOUNT</b>	<b>WARRANT</b>	<b>CHECK NO</b>	<b>INVOICE</b>
AAFCS	6319	406359	\$ 539.00		0	406359
ACCO BRANDS	6332	404376	\$ 739.16	REG	498943	2913658
ACE FITNESS SERVICES	6332	402984	\$ 731.96	REG	498691	2276
ADA SPORTS	6411	403828	\$ 590.00	REG	498944	K-9673
AHMAD, OMAR	6411	404763	\$ 517.95	REG	499836	REIMB. WRESTLING
AMAZON	6411	405191	\$ 603.75		0	405191
Amazon.com*2Z7YV53L3	6411	406419	\$ 1,047.60		0	406419
AMAZON.COM*FI8TC2FV3	6411	406421	\$ 677.00		0	406421
AMAZON.COM*J844X2643	6411	406420	\$ 2,704.95		0	406420
Amazon.com*MP0IS1413	6411	406423	\$ 635.85		0	406423
ART GLASS ARRAY	6411	404752	\$ 600.00	REG	499839	030620
ARTS & EDUCATION COU	2247	405043	\$ 507.86	EARLY	498895	031320 PAY
ARTS & EDUCATION COU	2247	406170	\$ 507.86	EARLY	499202	3/27/20 PAYROLL
AXA EQUITABLE	2227	406186	\$ 7,315.00	EARLY	499204	3/27/20 PAYROLL-2
AXA EQUITABLE	2227	405039	\$ 7,615.00	EARLY	498896	031320 PAY ROTH
BARDON, ERICA	6312	405315	\$ 500.00	REG	499844	INV 100
BATTERIES PLUS BULBS	6411	403453	\$ 766.08	031220	5401	P2466206B
BOWMAN, KEITH	6391	402816	\$ 600.00	REG	498703	NORTHMUSICAL2020
CHARACTERPLUS	6319	402726	\$ 500.00	REG	498712	1028
CHROMEBOOK SOLUTIONS	6412	405888	\$ 539.80	REG	499853	32741
CORRO-TECH,C-T	6332	404784	\$ 875.00	REG	499093	CT-11103
CRESTLINE - MOTO IPT	6411	406387	\$ 513.85		0	406387
CWA LOCAL 6355	2231	406175	\$ 832.25	EARLY	499207	3/27/20 PAYROLL
D39C COLLABORATIVE	6312	403594	\$ 770.00	EARLY	498631	1026
DAC INDUSTRIES	6411	402725	\$ 666.00	REG	498720	PKWY STEP 2-10-20
DIANA S.DAUGHERTY	2221	405049	\$ 2,605.06	EARLY	498903	031320 PAY
DIANA S.DAUGHERTY	2221	406161	\$ 2,605.06	EARLY	499208	3/27/20 PAYROLL
DUTCH HOLLOW SERVICE	6411	404977	\$ 778.26	032620	5456	243650
ENDANGERED WOLF CENT	6398	406439	\$ 568.00		0	406439
FAMILY SUPPORT PAYME	2221	406163	\$ 2,932.02	EARLY	499212	3/27/20 PAYROLL
FAMILY SUPPORT PAYME	2221	405050	\$ 3,081.63	EARLY	498904	031320 PAY
FIDELITY RETIREMENT	2227	405040	\$ 5,140.00	EARLY	498906	031320 PAY ROTH
FIDELITY RETIREMENT	2227	406188	\$ 5,190.00	EARLY	499213	3/27/20 PAYROLL-2
GOLDS GYM	2267	406178	\$ 3,704.62	EARLY	499215	3/27/20 PAYROLL
GREGORY F.X. DALY	2211	406158	\$ 4,391.60	EARLY	499216	MARCH 2020
HARSLEY, LATANYA	1310	405331	\$ 800.00	EARLY	499047	WH 9
HEDGES, MICHELLE	6391	404342	\$ 588.75	REG	498969	1003
HILLYARD	6411	405293	\$ 652.80	REG	499116	603794254
JOHN HENRY FOSTER	6411	405555	\$ 859.00	REG	499873	INV-00361226
LEGALSHIELD	2265	406177	\$ 2,710.76	EARLY	499220	3/27/20 PAYROLL
MASA SPORTING GOODS	6411	404175	\$ 603.35	REG	498985	415571-00
MILBRADT LAWN EQUIPM	6411	405001	\$ 959.97	REG	499142	70062
MISSOURI SAVING FOR	2241	405044	\$ 3,470.00	EARLY	498916	031320 PAY
MISSOURI SAVING FOR	2241	406172	\$ 3,470.00	EARLY	499222	3/27/20 PAYROLL

VENDOR NAME	OBJECT	DOCUMENT	AMOUNT	WARRANT	CHECK NO	INVOICE
NATIONAL FOOTBALL	6319	403619	\$ 550.00	REG	498779	FOOTBALLAWARDBANQUET
NORMAN LUMBER	6411	405009	\$ 947.24	REG	499151	2002-0143
OFFICE ESSENTIALS IN	6411	402797	\$ 558.23	REG	498553	CIV1138913
O'GRADY, SARAH	5181	405850	\$ 510.00	EARLY	499606	REFOGRADY
PERFORMANT RECOVERY	2221	405052	\$ 560.96	EARLY	498929	031320 PAY
PERFORMANT RECOVERY	2221	406165	\$ 560.96	EARLY	499821	3/27/20 PAYROLL
PJ PRINTING	6411	403055	\$ 760.00	031220	5419	10124167
PNEA	2231	405045	\$ 12,489.54	EARLY	498930	031320 PAY
PNEA	2231	406173	\$ 12,489.54	EARLY	499822	3/27/20 PAYROLL
PORTER, JANINE	1310	405981	\$ 550.00	EARLY	499633	CM 57 & CM 58
ROYAL PAPERS	6411	405286	\$ 950.00	REG	499167	950558
RUSH TRUCK CENTERS	6411	405551	\$ 509.17	REG	499899	3018588525
RUSH TRUCK CENTERS	6411	406578	\$ 620.00	REG	499899	3018666197
RUSH TRUCK CENTERS	6411	405549	\$ 955.60	REG	499899	3018571917
SOCIAL STUDIES SCHOO	6411	406356	\$ 1,500.00		0	406356
SPECIAL SCHOOL DIST-	6311	405704	\$ 1,418.56	REG	499911	TA-50/50-20-1
SQ *THE MAGIC HOUSE	6398	406437	\$ 500.50		0	406437
STARBEAM SUPPLY	6411	406545	\$ 515.25	REG	499914	392572-1
STERGOS, JACOB	6391	402817	\$ 600.00	REG	498817	NORTHMUSICAL
TATE, DANIELLE	1310	405317	\$ 800.00	EARLY	499053	CH2
TRINITY CHRISTIAN RE	6391	403750	\$ 656.25	REG	498827	156
TRINITY MT. CARMEL	6391	404753	\$ 625.00	REG	499189	1175-03
U.S. DEPARTMENT OF E	2221	405054	\$ 1,037.06	EARLY	498935	031320 PAY
U.S. DEPARTMENT OF E	2221	406167	\$ 1,653.44	EARLY	499829	3/27/20 PAYROLL
UNITED WAY	2245	405046	\$ 657.21	EARLY	498937	031320 PAY
UNITED WAY	2245	406174	\$ 657.21	EARLY	499832	3/27/20 PAYROLL
VALIC	2227	406183	\$ 4,686.28	EARLY	499833	3/27/20 PAYROLL
VALIC	2227	405037	\$ 5,696.28	EARLY	498939	031320 PAY
VRSCO	2227	405041	\$ 925.00	EARLY	498941	031320 PAY ROTH
VRSCO	2227	406189	\$ 925.00	EARLY	499834	3/27/20 PAYROLL-2
VRSCO	2227	405038	\$ 8,774.97	EARLY	498941	031320 PAY
VRSCO	2227	406184	\$ 8,774.97	EARLY	499834	3/27/20 PAYROLL
WILLIAMS, SHANE	6312	404239	\$ 500.00	REG	499195	247
WINNING STREAK	6411	403046	\$ 679.00	031220	5433	148021
WINNING STREAK	6411	404181	\$ 715.00	031920	5449	150673
WORLDSTRIDES ON STAG	6398	402711	\$ 562.00	EARLY	498686	180807A
		<b>TOTAL:</b>	<b>\$ 152,877.02</b>			

**\$15,000+**  
**MARCH FY20**

<b>VENDOR NAME</b>	<b>OBJECT</b>	<b>DOCUMENT</b>	<b>AMOUNT</b>	<b>WARRANT</b>	<b>CHECK NO</b>	<b>INVOICE</b>
AXA EQUITABLE	2227	406180	\$ 24,796.98	EARLY	499204	3/27/20 PAYROLL
AXA EQUITABLE	2227	405035	\$ 25,096.98	EARLY	498896	031320 PAY
FIDELITY RETIREMENT	2227	406182	\$ 52,685.93	EARLY	499213	3/27/20 PAYROLL
FIDELITY RETIREMENT	2227	405036	\$ 54,640.93	EARLY	498906	031320 PAY
		<b>TOTAL:</b>	<b>\$ 157,220.82</b>			

**PURCHASE ORDERS**  
**\$500 - \$15,000**  
**MARCH FY20**

<b>PO#</b>	<b>Vendor Name</b>	<b>PO Date</b>	<b>Order Amount</b>	<b>Balance</b>	<b>Status</b>	<b>1st GL Account</b>
19200023	AALCO MANUFACTURING COMPANY	03/17/2020	\$ 1,188.00	\$ 1,188.00	8 - Printed	10.2411.111.4260.641
85200389	ACCURATE ASPHALT PAVING CO.INC	03/11/2020	\$ 1,500.00	\$ -	0 - Closed	10.2542.554.0085.631
85200382	ACCURATE SAFETY DISTRIBUTORS, INC	03/04/2020	\$ 2,886.10	\$ 2,886.10	8 - Printed	10.2542.555.0085.641
62200305	ADORAMA INC	03/02/2020	\$ 2,444.24	\$ 2,444.24	8 - Printed	10.1151.351.1050.641
62200318	ADORAMA INC	03/11/2020	\$ 9,632.00	\$ 9,632.00	8 - Printed	10.1151.351.1090.641
63200308	ASSETGENIE, INC.	03/20/2020	\$ 4,171.50	\$ 4,171.50	8 - Printed	10.0000.000.0000.161
63200304	ASSETGENIE, INC.	03/13/2020	\$ 5,260.00	\$ -	0 - Closed	10.0000.000.0000.161
63200285	ASSETGENIE, INC.	03/04/2020	\$ 6,423.50	\$ 5,077.25	8 - Printed	10.0000.000.0000.161
63200298	B & H PHOTO & ELECTRONICS CORP.	03/11/2020	\$ 708.93	\$ 708.93	8 - Printed	11.1151.900.1080.641
58200232	BANDEMER MARKETING, INC	03/16/2020	\$ 2,000.00	\$ 2,000.00	8 - Printed	11.1421.900.1090.641
85200387	BENTLEY SYSTEMS INC	03/06/2020	\$ 3,863.82	\$ -	0 - Closed	10.2541.556.0085.641
63200306	BEST BUY BUSINESS ADVANTAGE ACCOUNT	03/13/2020	\$ 517.21	\$ 517.21	8 - Printed	11.1111.900.4040.641
85200399	BI-STATE ROOF SYSTEM	03/20/2020	\$ 1,370.00	\$ -	0 - Closed	10.2542.554.0085.631
54200214	BLICK ART MATERIALS	03/16/2020	\$ 1,612.40	\$ 1,612.40	8 - Printed	10.1151.110.1080.641
62200321	BLUE VALLEY SCHOOLS	03/20/2020	\$ 1,500.00	\$ -	0 - Closed	10.1321.119.0075.637
85200392	BOBCAT OF ST LOUIS	03/13/2020	\$ 2,000.00	\$ 2,000.00	8 - Printed	10.2543.553.0085.633
97200115	BRANDT & SONS ACE HARDWARE	03/05/2020	\$ 1,500.00	\$ 774.42	8 - Printed	10.2552.512.0080.641
85200391	C & B LIFT TRUCK SERVICE, INC	03/13/2020	\$ 2,000.00	\$ 2,000.00	8 - Printed	10.2543.553.0085.633
58200227	CAROLINA BIOLOGICAL SUPPLY	03/11/2020	\$ 2,340.00	\$ 2,340.00	8 - Printed	10.1151.106.1090.641
58200226	CASUAL TEES	03/06/2020	\$ 602.00	\$ 602.00	8 - Printed	11.1411.900.1090.641
56200233	CASUAL TEES	03/16/2020	\$ 2,210.90	\$ 2,210.90	8 - Printed	10.2411.111.1075.641
56200232	CASUAL TEES	03/16/2020	\$ 3,495.80	\$ 3,495.80	8 - Printed	11.1411.900.1075.641
63200307	CDW-G	03/20/2020	\$ 1,085.64	\$ 1,085.64	8 - Printed	10.2541.556.0085.641
38200005	CHARACTERPLUS	03/13/2020	\$ 3,922.00	\$ 3,922.00	8 - Printed	10.2321.405.0070.631
48200160	CI SELECT	03/20/2020	\$ 9,600.00	\$ 9,600.00	8 - Printed	48.4051.618.3020.652
73200061	CITY OF UNIVERSITY CITY	03/11/2020	\$ 3,300.00	\$ 3,024.00	8 - Printed	10.1421.204.1050.631
85200398	CLEAN CARTON CO INC	03/20/2020	\$ 3,000.00	\$ 3,000.00	8 - Printed	10.2542.554.0085.641
62200317	COOPERATIVE EDUCATIONAL SERVICE AGENCY #1	03/11/2020	\$ 1,600.00	\$ 1,600.00	8 - Printed	10.2213.351.0075.631
97200114	CREST INDUSTRIES INC	03/05/2020	\$ 2,000.00	\$ 1,774.90	8 - Printed	10.2552.512.0080.641
85200397	CROSSROADS COURIER INC.	03/20/2020	\$ 3,000.00	\$ 2,929.89	8 - Printed	10.2542.554.0085.636
97200113	D & L TOWING	03/05/2020	\$ 1,500.00	\$ 675.00	8 - Printed	10.2552.512.0080.639
85200384	DH PACE COMPANY	03/04/2020	\$ 1,525.20	\$ -	0 - Closed	10.2542.554.0085.633
48200150	DH PACE COMPANY	03/13/2020	\$ 8,141.00	\$ 8,141.00	8 - Printed	48.4051.618.1075.652
48200151	DH PACE COMPANY	03/13/2020	\$ 14,802.00	\$ 14,802.00	8 - Printed	48.4051.618.1075.652
85200381	DOCUMENT COPY SERVICE, INC	03/04/2020	\$ 1,000.00	\$ 835.00	8 - Printed	10.2542.554.0085.636
62200324	EF INSTITUTE FOR CULTURAL EXCHANGE, INC	03/24/2020	\$ 7,000.00	\$ -	0 - Closed	11.1411.900.0075.639
56200220	EL DORADO TRADING GROUP, INC	03/06/2020	\$ 895.00	\$ 895.00	8 - Printed	11.1411.900.1075.641
85200404	ENERGY PETROLEUM COMPANY	03/27/2020	\$ 2,509.96	\$ -	0 - Closed	10.2541.556.0085.648
85200386	ENERGY PETROLEUM COMPANY	03/05/2020	\$ 3,479.77	\$ -	0 - Closed	10.2541.556.0085.648
97200124	ENERGY PETROLEUM COMPANY	03/11/2020	\$ 13,397.55	\$ 13,397.55	8 - Printed	10.2552.512.0080.648
97200123	FERGUSON-FLORISSANT SCHL DIST	03/11/2020	\$ 2,500.00	\$ 1,933.34	8 - Printed	10.2555.514.0080.634
23200031	FOLLETT SCHOOL SOLUTIONS, INC	03/30/2020	\$ 500.00	\$ 500.00	8 - Printed	10.2222.122.4190.644
62200315	FOLLETT SCHOOL SOLUTIONS, INC	03/11/2020	\$ 669.51	\$ 669.51	8 - Printed	10.1131.351.3000.643
83200132	FOLLETT SCHOOL SOLUTIONS, INC	03/03/2020	\$ 690.33	\$ 690.33	8 - Printed	10.2222.355.4130.644
83200143	FOLLETT SCHOOL SOLUTIONS, INC	03/20/2020	\$ 1,053.19	\$ 1,053.19	8 - Printed	10.2222.355.4235.644
83200137	FOLLETT SCHOOL SOLUTIONS, INC	03/05/2020	\$ 1,132.06	\$ 1,132.06	8 - Printed	10.2222.355.4160.644

PO#	Vendor Name	PO Date	Order Amount	Balance	Status	1st GL Account
83200135	FOLLETT SCHOOL SOLUTIONS, INC	03/04/2020	\$ 1,368.49	\$ 1,368.49	8 - Printed	10.2222.355.4060.644
83200139	FOLLETT SCHOOL SOLUTIONS, INC	03/11/2020	\$ 1,544.67	\$ 1,544.67	8 - Printed	10.2222.355.4260.644
62200314	FOLLETT SCHOOL SOLUTIONS, INC	03/11/2020	\$ 1,678.75	\$ 1,678.75	8 - Printed	10.1131.351.3000.643
62200311	FOLLETT SCHOOL SOLUTIONS, INC	03/04/2020	\$ 1,725.13	\$ 1,725.13	8 - Printed	10.1131.351.3020.643
62200312	FOLLETT SCHOOL SOLUTIONS, INC	03/11/2020	\$ 1,912.30	\$ 1,912.30	8 - Printed	10.1131.351.3060.643
62200326	FOLLETT SCHOOL SOLUTIONS, INC	03/30/2020	\$ 2,074.02	\$ 2,074.02	8 - Printed	10.1131.351.3020.643
83200141	FOLLETT SCHOOL SOLUTIONS, INC	03/20/2020	\$ 2,444.00	\$ 2,444.00	8 - Printed	10.2222.355.3080.644
83200138	FOLLETT SCHOOL SOLUTIONS, INC	03/11/2020	\$ 2,939.05	\$ 2,939.05	8 - Printed	10.2222.355.3000.644
83200144	FOLLETT SCHOOL SOLUTIONS, INC	03/20/2020	\$ 3,490.01	\$ 3,490.01	8 - Printed	10.2222.355.1080.644
83200136	FOLLETT SCHOOL SOLUTIONS, INC	03/05/2020	\$ 4,009.70	\$ 4,009.70	8 - Printed	10.2222.355.1075.644
83200142	FOLLETT SCHOOL SOLUTIONS, INC	03/20/2020	\$ 4,109.66	\$ 4,109.66	8 - Printed	10.2222.355.4035.644
62200313	FOLLETT SCHOOL SOLUTIONS, INC	03/11/2020	\$ 4,774.50	\$ 4,774.50	8 - Printed	10.1131.351.3000.643
62200304	GUITAR CENTER	03/02/2020	\$ 2,148.00	\$ -	0 - Closed	10.1131.351.3000.641
12200013	HEART ZONES INC	03/30/2020	\$ 2,696.54	\$ 2,696.54	8 - Printed	10.1111.105.4120.641
85200393	HEAVY DUTY EQUIPMENT	03/13/2020	\$ 5,000.00	\$ 3,841.16	8 - Printed	10.2543.553.0085.633
40200026	HERFF JONES INC	03/31/2020	\$ 3,500.00	\$ 3,500.00	8 - Printed	11.1411.900.3020.641
63200291	HEWLETT-PACKARD	03/05/2020	\$ 815.71	\$ 815.71	8 - Printed	10.1151.510.1075.641
63200300	HEWLETT-PACKARD	03/11/2020	\$ 1,540.50	\$ 1,540.50	8 - Printed	10.2541.556.0085.641
63200292	HEWLETT-PACKARD	03/05/2020	\$ 2,437.50	\$ 2,437.50	8 - Printed	10.2521.507.0070.641
85200388	HOLT ELECTRICAL SUPPLIES	03/06/2020	\$ 2,800.08	\$ 2,800.08	8 - Printed	10.2542.552.0085.641
62200322	IMM, KARA	03/20/2020	\$ 1,500.00	\$ -	0 - Closed	10.2213.805.0075.631
12200012	KANSAS CITY AUDIO-VISUAL	03/06/2020	\$ 12,181.82	\$ 12,181.82	8 - Printed	40.1111.111.4120.654
73200060	KELLY PRESS	03/02/2020	\$ 3,000.00	\$ -	0 - Closed	11.1421.900.0070.641
85200401	KIESEL COMPANY	03/24/2020	\$ 3,634.26	\$ -	0 - Closed	10.2541.556.0085.648
56200230	KRUEGER POTTERY	03/11/2020	\$ 695.77	\$ 695.77	8 - Printed	10.1151.110.1075.641
85200390	LANDMARK SIGN COMPANY	03/11/2020	\$ 5,256.15	\$ 5,256.15	8 - Printed	10.2542.552.0085.633
73200063	LAWS, MATTHEW	03/11/2020	\$ 2,000.00	\$ -	0 - Closed	10.1411.104.1080.639
62200325	LOGAN UNIVERSITY COLLEGE OF CHIROPRACTIC	03/25/2020	\$ 1,525.00	\$ -	0 - Closed	10.1111.104.0075.633
97200116	LOWE AUTOMOTIVE	03/05/2020	\$ 10,000.00	\$ 4,618.75	8 - Printed	10.2552.512.0080.641
97200125	MERCY CORPORATE HEALTH	03/11/2020	\$ 1,500.00	\$ 1,108.86	8 - Printed	10.2552.512.0080.631
97200112	MIDWEST BUS SALES INC	03/02/2020	\$ 10,000.00	\$ -	0 - Closed	10.2552.512.0080.641
85200405	MILFORD SUPPLY COMPANY INC	03/27/2020	\$ 1,093.85	\$ 1,093.85	8 - Printed	10.1131.110.3000.641
85200379	MILFORD SUPPLY COMPANY INC	03/03/2020	\$ 1,250.00	\$ -	0 - Closed	10.1111.111.4120.641
63200286	MINNESOTA MEMORY, INC.	03/04/2020	\$ 2,781.74	\$ -	0 - Closed	10.0000.000.0000.161
62200319	MISSOURI STATE THESPIANS	03/11/2020	\$ 2,403.12	\$ -	0 - Closed	10.1151.351.1090.639
54200210	MO DECA	03/11/2020	\$ 5,630.00	\$ -	0 - Closed	10.1321.805.1080.631
58200222	MO DECA	03/02/2020	\$ 5,740.00	\$ 110.00	8 - Printed	10.1321.805.1090.631
85200402	MPGTANDEM	03/24/2020	\$ 1,900.00	\$ 1,900.00	8 - Printed	10.2541.556.0085.641
54200215	MU ALPHA THETA	03/16/2020	\$ 650.00	\$ 650.00	8 - Printed	11.1411.900.1080.641
56200221	MU ALPHA THETA	03/06/2020	\$ 975.00	\$ 975.00	8 - Printed	11.1411.900.1075.641
97200121	MYBRANDPROMO INC	03/11/2020	\$ 2,000.00	\$ 2,000.00	8 - Printed	11.1411.900.0080.641
85200406	NELSON LAND SERVICE LLC	03/27/2020	\$ 10,000.00	\$ 10,000.00	8 - Printed	10.2543.553.0085.639
62200306	NOTTELMANN MUSIC CO	03/02/2020	\$ 1,595.00	\$ 1,595.00	8 - Printed	10.1131.351.3020.641
85200385	OFFICE ESSENTIALS INCORPORATED	03/04/2020	\$ 628.96	\$ 628.96	8 - Printed	10.2542.554.0085.641
43200032	OFFICE ESSENTIALS INCORPORATED	03/06/2020	\$ 1,430.67	\$ 1,430.67	8 - Printed	10.1131.111.3080.641
97200120	OFFICE ESSENTIALS INCORPORATED	03/11/2020	\$ 1,500.00	\$ 1,052.28	8 - Printed	10.2552.512.0080.641
63200290	OFFICE ESSENTIALS INCORPORATED	03/05/2020	\$ 2,721.80	\$ 2,721.80	8 - Printed	10.1321.510.1050.641
79200009	OFFICE ESSENTIALS INCORPORATED	03/04/2020	\$ 3,000.00	\$ 3,000.00	8 - Printed	10.3512.207.7500.641

PO#	Vendor Name	PO Date	Order Amount	Balance	Status	1st GL Account
54200205	OFFICE ESSENTIALS INCORPORATED	03/06/2020	\$ 4,020.97	\$ 4,020.97	8 - Printed	10.1151.111.1080.641
48200148	OFFICE ESSENTIALS INCORPORATED	03/04/2020	\$ 5,750.00	\$ 5,750.00	8 - Printed	48.4051.618.0075.652
63200296	OFFICE ESSENTIALS INCORPORATED	03/06/2020	\$ 7,846.84	\$ 7,846.84	8 - Printed	10.1321.510.1050.641
39200016	OLDHAM CHEMICALS COMPANY INC	03/20/2020	\$ 1,000.00	\$ 1,000.00	8 - Printed	10.2542.555.0085.641
85200394	OLDHAM CHEMICALS COMPANY INC	03/13/2020	\$ 1,000.00	\$ 1,000.00	8 - Printed	10.2542.552.0085.641
38200004	OVATION COMPANY	03/04/2020	\$ 1,210.00	\$ -	0 - Closed	10.2321.405.0070.639
50200105	PEPSI-COLA METROPOLITAN BOTTLING COMPANY, INC.	03/06/2020	\$ 4,999.00	\$ 4,368.95	8 - Printed	11.1411.900.1050.641
48200152	PROFESSIONAL SERVICE INDUSTRIES	03/13/2020	\$ 1,550.00	\$ 1,550.00	8 - Printed	48.4051.618.0075.652
48200149	PROFESSIONAL SERVICE INDUSTRIES	03/04/2020	\$ 8,864.00	\$ 8,864.00	8 - Printed	48.4031.618.4260.652
97200119	RABEN TIRE CO. LLC	03/05/2020	\$ 14,000.00	\$ 82.75	8 - Printed	10.2552.512.0080.633
63200297	RADIO COMM CO. WASHINGTON	03/06/2020	\$ 601.50	\$ 601.50	8 - Printed	10.2411.111.3020.641
54200218	RAISING CANE'S RESTAURANTS, LLC	03/30/2020	\$ 2,406.60	\$ -	0 - Closed	11.1411.900.1080.641
56200234	RAPIDS FOODSERVICE CONTRACT	03/16/2020	\$ 3,758.00	\$ 3,758.00	8 - Printed	40.2411.111.1075.654
73200062	REFPAY TR DTD 7-31-09	03/11/2020	\$ 11,000.00	\$ 11,000.00	8 - Printed	10.1421.204.0075.631
97200117	RITENOUR SCHOOL DISTRICT	03/05/2020	\$ 1,500.00	\$ 1,500.00	4 - Allocated	10.2555.514.0080.634
63200302	ROTH, WILLIAM J.	03/11/2020	\$ 1,474.00	\$ -	0 - Closed	10.2331.510.0070.641
62200308	SCHILLER'S IMAGING CO.	03/02/2020	\$ 2,951.98	\$ -	0 - Closed	10.1151.351.1080.641
62200310	SCHILLER'S IMAGING CO.	03/03/2020	\$ 5,954.25	\$ 5,954.25	8 - Printed	10.1151.351.1080.641
54200211	SCHOLASTIC 3725	03/13/2020	\$ 549.45	\$ 549.45	8 - Printed	10.1151.102.1080.641
23200030	SCHOLASTIC 3725	03/13/2020	\$ 5,192.53	\$ -	0 - Closed	11.1411.900.4190.641
32200007	SCHOOL HEALTH CORPORATION	03/03/2020	\$ 3,000.00	\$ 3,000.00	8 - Printed	10.1191.151.0075.641
17200041	SCHOOL SPECIALTY-	03/13/2020	\$ 900.00	\$ 900.00	8 - Printed	10.1111.110.4110.641
56200227	SHERATON WEST PORT INN	03/06/2020	\$ 14,000.00	\$ -	0 - Closed	11.1411.900.1075.639
43200033	SISTAKEEPER EMPOWERMENT CENTER	03/16/2020	\$ 1,734.00	\$ 1,734.00	8 - Printed	10.2411.111.3080.639
50200106	SIX FLAGS	03/06/2020	\$ 6,887.50	\$ 6,437.50	8 - Printed	11.1151.900.1050.639
58200223	SIX FLAGS	03/03/2020	\$ 12,701.70	\$ 12,701.70	8 - Printed	11.1411.900.1090.639
19200022	ST. LOUIS CARDINALS -GROUP SALES	03/11/2020	\$ 4,377.00	\$ 4,377.00	8 - Printed	11.1411.900.4260.641
1200037	ST. LOUIS CARDINALS -GROUP SALES	03/06/2020	\$ 6,400.00	\$ -	0 - Closed	11.1411.900.4020.639
50200108	ST. LOUIS CARDINALS -GROUP SALES	03/11/2020	\$ 13,600.00	\$ 13,600.00	8 - Printed	11.1421.900.1050.641
85200407	ST. LOUIS CNTY HEALTH DEPT	03/27/2020	\$ 1,416.00	\$ -	0 - Closed	10.2542.552.0085.641
81200049	ST. LOUIS CNTY HEALTH DEPT	03/27/2020	\$ 4,504.00	\$ 4,504.00	8 - Printed	10.2561.504.0085.639
46200048	SWEETWATER SOUND, INC.	03/03/2020	\$ 2,830.67	\$ -	0 - Closed	40.2411.111.3000.654
58200230	TJ'S PIZZA	03/11/2020	\$ 2,000.00	\$ 2,000.00	8 - Printed	11.1411.900.1090.641
56200224	TOLEDO PHYSICAL EDUCATION SUPP	03/06/2020	\$ 990.00	\$ 990.00	8 - Printed	10.1151.105.1075.641
62200323	TSG DOWNTOWN CHESTERFIELD REDEVELOPMENT, LLC	03/20/2020	\$ 1,050.00	\$ 700.00	8 - Printed	10.1351.805.0075.633
85200400	UNIPAK CORP.	03/20/2020	\$ 8,450.00	\$ 8,450.00	8 - Printed	10.2542.551.0085.641
50200109	UNIVERSAL CREATIVE CONCEPTS	03/30/2020	\$ 2,158.95	\$ 2,158.95	8 - Printed	11.1411.900.1050.641
54200212	USA TOURS, INC.	03/13/2020	\$ 870.00	\$ 870.00	8 - Printed	11.2551.900.1080.634
54200217	VEX ROBOTICS INC.	03/20/2020	\$ 2,000.00	\$ 2,000.00	8 - Printed	11.1411.900.1080.641
56200226	VIVIANO'S CHESTERFIELD	03/06/2020	\$ 509.00	\$ -	0 - Closed	11.1411.900.1075.641



<b>PO#</b>	<b>Vendor Name</b>	<b>PO Date</b>	<b>Order Amount</b>	<b>Balance</b>	<b>Status</b>	<b>1st GL Account</b>
56200225	VIVIANO'S CHESTERFIELD	03/06/2020	\$ 524.40	\$ -	0 - Closed	11.1421.900.1075.641
62200309	WASHINGTON MUSIC SALES CENTER INC.	03/02/2020	\$ 3,014.10	\$ 3,014.10	8 - Printed	40.1131.351.3080.654
56200231	WEINHARDT PARTY RENTAL, INC.	03/11/2020	\$ 808.75	\$ 808.75	8 - Printed	11.1411.900.1075.633
58200229	WHITE KNIGHT LIMOUSINE INC.	03/11/2020	\$ 3,225.00	\$ -	0 - Closed	11.2551.900.1090.634
54200208	WHITE KNIGHT LIMOUSINE INC.	03/06/2020	\$ 3,875.00	\$ 3,875.00	8 - Printed	11.2551.900.1080.634
97200118	WINDSHIELDS & MORE INC	03/05/2020	\$ 1,770.00	\$ -	0 - Closed	10.2552.512.0080.641
54200203	WINNING STREAK	03/03/2020	\$ 516.00	\$ 516.00	8 - Printed	10.1421.117.1080.641
54200207	WINNING STREAK	03/06/2020	\$ 624.00	\$ 624.00	8 - Printed	11.1421.900.1080.641
50200107	WINNING STREAK	03/06/2020	\$ 1,749.00	\$ -	0 - Closed	11.1421.900.1050.641
73200064	WINNING STREAK	03/31/2020	\$ 2,481.75	\$ 2,481.75	8 - Printed	11.1421.900.0075.641
48200158	WSP USA INC	03/16/2020	\$ 10,500.00	\$ 10,500.00	8 - Printed	48.4031.618.4180.652
	<b>TOTAL:</b>		<b>\$ 502,227.30</b>			

**\$15,000+**  
**MARCH FY20**

<b>PO#</b>	<b>Vendor Name</b>	<b>PO Date</b>	<b>Order Amount</b>	<b>Balance</b>	<b>Status</b>	<b>1st GL Account</b>
97200126	AUTOMOTIVE TECHNOLOGY INC	03/20/2020	\$ 273,982.00	\$ 273,982.00	8 - Printed	40.2552.512.0080.654
56200235	COLLEGE BOARD-MEMBERSHIP FEE	03/27/2020	\$ 34,850.00	\$ 34,850.00	8 - Printed	11.1151.900.1075.631
58200231	COLLEGE BOARD-MEMBERSHIP FEE	03/16/2020	\$ 72,250.00	\$ 72,250.00	8 - Printed	11.1151.900.1090.631
85200380	DJM ECOLOGICAL SERVICES	03/04/2020	\$ 15,967.00	\$ 15,967.00	8 - Printed	10.2542.554.0085.631
62200316	DRC-DATA RECOGNITION CORPORATION	03/11/2020	\$ 16,617.60	\$ 16,617.60	8 - Printed	10.2123.357.0075.641
76200013	EAB GLOBAL, INC.	03/03/2020	\$ 29,862.00	\$ -	0 - Closed	10.2321.402.0070.637
85200403	GREENWOOD GROUP, LLC	03/27/2020	\$ 39,500.00	\$ 39,500.00	8 - Printed	10.2543.553.0085.639
63200287	JOURNEY EDUCATION MARKETING	03/04/2020	\$ 173,021.50	\$ -	0 - Closed	10.2331.510.0070.641
48200147	OFFICE ESSENTIALS INCORPORATED	03/04/2020	\$ 16,267.57	\$ 16,267.57	8 - Printed	48.4051.618.0075.652
48200161	OFFICE ESSENTIALS INCORPORATED	03/30/2020	\$ 416,250.10	\$ 416,250.10	8 - Printed	48.4051.618.0075.652
39200015	PROFESSIONAL SERVICE INDUSTRIES	03/04/2020	\$ 31,630.00	\$ 31,630.00	8 - Printed	10.2542.555.0085.633
85200408	SCHILLER'S IMAGING CO.	03/30/2020	\$ 18,870.00	\$ 18,870.00	8 - Printed	10.2225.510.0070.641
97200122	SOUTHERN BUS & MOBILITY	03/11/2020	\$ 55,509.00	\$ -	0 - Closed	40.2552.512.0080.655
63200295	STAPLES	03/05/2020	\$ 163,771.50	\$ -	0 - Closed	10.1151.510.0075.641
81200048	SUNFARM	03/04/2020	\$ 26,000.00	\$ 25,137.39	8 - Printed	10.2561.504.0085.647
48200153	TARKETT USA INC.	03/16/2020	\$ 267,122.52	\$ 267,122.52	8 - Printed	48.4051.618.4120.652
48200155	WSP USA INC	03/16/2020	\$ 61,365.15	\$ 61,365.15	8 - Printed	48.4031.618.4020.652
48200154	WSP USA INC	03/16/2020	\$ 93,379.65	\$ 93,379.65	8 - Printed	48.4031.618.4210.652
48200159	WSP USA INC	03/16/2020	\$ 107,459.10	\$ 107,459.10	8 - Printed	48.4031.618.0059.652
48200157	WSP USA INC	03/16/2020	\$ 120,332.10	\$ 120,332.10	8 - Printed	48.4031.618.1090.652
48200156	WSP USA INC	03/16/2020	\$ 380,613.45	\$ 380,613.45	8 - Printed	48.4031.618.1075.652
72200015	YMCA TROUT LODGE & CAMP	03/11/2020	\$ 18,280.00	\$ -	0 - Closed	10.1131.124.3020.639
72200016	YMCA TROUT LODGE & CAMP	03/11/2020	\$ 18,280.00	\$ -	0 - Closed	10.1131.124.3020.639
72200017	YMCA TROUT LODGE & CAMP	03/11/2020	\$ 18,280.00	\$ -	0 - Closed	10.1131.124.3020.639
62200320	YMCA TROUT LODGE & CAMP	03/11/2020	\$ 18,280.00	\$ -	0 - Closed	10.1131.124.3040.639
<b>TOTAL:</b>			<b>\$ 2,487,740.24</b>			

**SPOT MARKET REPORT - MARCH FY20**

Purchase Order #	Date	Vendor #	Vendor Name	Comm. Code	QTY	UOM	Unit Price	Description	Object	Account Amt
61200013	07/24/2019	809084	OFFICE ESSENTIALS INCORPORATED	202	840	EACH	\$ 32.68	8.5 x 11 WHITE COPY PAPER - 30% RECYCLED PAPER - UNIVERSAL	1615	\$ 27,451.20
61200013					120	EACH	\$ 32.68	8 1/2" X 11" COPY PAPER - 30% RECYLED CONTENT - ESSENTIALS BRAND	1615	\$ 3,921.60
61200019	09/03/2019	632285	DUTCH HOLLOW SERVICES & SUPPLIES INC.	202						
61200019					840	EACH	\$ 31.30	8.5 x 11 WHITE COPY PAPER - 30% RECYCLED PAPER - UNIVERSAL #20030	1615	\$ 26,292.00
61200019					80	EACH	\$ 31.30	8.5 x 11 WHITE COPY PAPER - 30% RECYCLED PAPER - UNIVERSAL #20030	1615	\$ 2,504.00
61200026	10/04/2019	632285	DUTCH HOLLOW SERVICES & SUPPLIES INC.	202						
61200026					840	EACH	\$ 31.30	8.5 x 11 WHITE COPY PAPER - 30% RECYCLED PAPER - UNIVERSAL #20030	1615	\$ 26,292.00
61200028	11/12/2019	632285	DUTCH HOLLOW SERVICES & SUPPLIES INC.	202						
61200028					840	EACH	\$ 31.30	8.5 x 11 WHITE COPY PAPER - 30% RECYCLED PAPER - UNIVERSAL #20030	1615	\$ 26,292.00
61200030	01/02/2020	632285	DUTCH HOLLOW SERVICES & SUPPLIES INC.	202						
61200030					840	EACH	\$ 31.29	8.5 x 11 WHITE COPY PAPER - 30% RECYCLED PAPER - UNIVERSAL #20030	1615	\$ 26,283.60
61200033	02/27/2020	632285	DUTCH HOLLOW SERVICES & SUPPLIES INC.	202						
61200033					840	EACH	\$ 31.28	8.5 x 11 WHITE COPY PAPER - 30% RECYCLED P	1615	\$ 26,275.20
85200129	07/30/2019	642477	ENERGY PETROLEUM COMPANY	400	314.5	EACH	\$ 2.25	NO LEAD 87 OCT RFG	6486	\$ 707.63
85200129					1	EACH	\$ 55.10	FEDERAL AND STATE TAXES AND FEES - 6233676	6486	\$ 55.10
85200129					417.4	EACH	\$ 2.13	#2 DIESEL ULTRA LS	6486	\$ 889.06



85200213					1	EACH	\$	294.37	FEDERAL AND STATE TAXES AND FEES - 6241920				
85200213										6486	\$	294.37	
85200213					360.2	EACH	\$	1.91	#2 DIESEL ULTRA LS		6486	\$	686.58
85200213													
85200213					1	EACH	\$	63.10	FEDERAL AND STATE TAXES AND FEES - 6241921				
85200213										6486	\$	63.10	
85200213					387.8	EACH	\$	1.90	NO LEAD 87 OCT RFG		6486	\$	736.43
85200213													
85200213					1	EACH	\$	67.95	FEDERAL AND STATE TAXES AND FEES - 6241919				
85200213										6486	\$	67.95	
85200236	09/26/2019	642477	ENERGY PETROLEUM COMPANY	400									
85200236					1500.1	EACH	\$	1.82	NO LEAD 87 OCT RFG		6486	\$	2,730.18
85200236													
85200236					1	EACH	\$	262.82	FEDERAL AND STATE TAXES AND FEES - 6247716				
85200236										6486	\$	262.82	
85200236					300	EACH	\$	1.91	#2 DIESEL ULTRA LS -6247717		6486	\$	573.00
85200236													
85200236					1	EACH	\$	52.56	FEDERAL AND STATE TAXES AND FEES - 6247717				
85200236										6486	\$	52.56	
85200236					350.4	EACH	\$	1.82	NO LEAD 87 OCT RFG - 6247715		6486	\$	637.73
85200236													
85200236					1	EACH	\$	61.40	FEDERAL AND STATE TAXES AND FEES - 6247715				
85200236										6486	\$	61.40	
85200207					1	EACH	\$	70.08	FEDERAL AND STATE TAXES AND FEES - 16239725				
85200241	10/08/2019	642477	ENERGY PETROLEUM COMPANY	400						6486	\$	70.08	
85200241					799.9	EACH	\$	1.86	NO LEAD 87 OCT RFG - 6249168		6486	\$	1,484.05
85200241													
85200241					1	EACH	\$	140.14	FEDERAL AND STATE TAXES AND FEES - 6249168				
85200241										6486	\$	140.14	
85200241					377.5	EACH	\$	2.10	#2 DIESEL ULTRA LS - 6249169		6486	\$	792.75
85200241													
85200241					1	EACH	\$	66.14	FEDERAL AND STATE TAXES AND FEES - 6249169				
85200241										6486	\$	66.14	
85200241					352.4	EACH	\$	1.86	NO LEAD 87 OCT RFG - 6249167		6486	\$	653.81
85200241													
85200241					1	EACH	\$	61.74	FEDERAL AND STATE TAXES AND FEES - 6249167				

85200241										6486	\$	61.74
85200251	10/10/2019	642477	ENERGY PETROLEUM COMPANY	400								
85200251					1600.3	EACH	\$	1.87	NO LEAD 87 OCT RFG - 6251410			
85200251										6486	\$	2,984.56
85200251					1	EACH	\$	280.37	FEDERAL AND STATE TAXES AND FEES - 6251410			
85200251										6486	\$	280.37
85200251					422.1	EACH	\$	2.13	#2 DIESEL ULTRA LS - 6251412			
85200251										6486	\$	896.96
85200251					1	EACH	\$	73.96	FEDERAL AND STATE TAXES AND FEES - 6251412			
85200251										6486	\$	73.96
85200251					419.5	EACH	\$	1.87	NO LEAD 87 OCT RFG - 6251411			
85200251										6486	\$	782.37
85200251					1	EACH	\$	73.50	FEDERAL AND STATE TAXES AND FEES - 6251411			
85200251										6486	\$	73.50
85200270	10/30/2019	642477	ENERGY PETROLEUM COMPANY	400								
85200270					400	EACH	\$	1.80	NO LEAD 87 OCT RFG - 6254980			
85200270										6486	\$	720.00
85200270					1	EACH	\$	70.08	FEDERAL AND STATE TAXES AND FEES - 6254980			
85200270										6486	\$	70.08
85200270					314.2	EACH	\$	1.97	#2 DIESEL ULTRA LS - 6254981			
85200270										6486	\$	617.40
85200270					1	EACH	\$	55.04	FEDERAL AND STATE TAXES AND FEES - 6254981			
85200270										6486	\$	55.04
85200270					1323	EACH	\$	1.80	NO LEAD 87 OCT RFG - 6254979			
85200270										6486	\$	2,381.40
85200270					1	EACH	\$	231.79	FEDERAL AND STATE TAXES AND FEES - 6254979			
85200270										6486	\$	231.79
85200274	10/30/2019	915734	SIEVEKING INC.	400								
85200274					1100.3	EACH	\$	1.94	353 N/L GASOHOL 87 OCTANE			
85200274										6486	\$	2,134.58
85200274					1	EACH	\$	196.47	FEDERAL AND STATE TAXES AND FEES ON 353 N/L GASOHOL 87 OCTANE			
85200274										6486	\$	196.47
85200288	11/22/2019	642477	ENERGY PETROLEUM COMPANY	400								
85200288					1081.8	EACH	\$	1.88	NO LEAD 87 OCT RFG - 6257132			
85200288										6486	\$	2,033.78
85200288					1	EACH	\$	189.54	FEDERAL AND STATE TAXES AND FEES - 6257132			
85200288										6486	\$	189.54

85200288					418.5	EACH	\$	1.88	NO LEAD 87 OCT RFG - 6257131			
85200288										6486	\$	786.78
85200288					1	EACH	\$	73.32	FEDERAL AND STATE TAXES AND FEES - 6257131			
85200288										6486	\$	73.32
85200289	11/22/2019	642477	ENERGY PETROLEUM COMPANY	400								
85200289					419	EACH	\$	1.81	NO LEAD 87 OCT RFG - 11741814			
85200289										6486	\$	758.39
85200289					1	EACH	\$	73.41	FEDERAL AND STATE TAXES AND FEES - 11741814			
85200289										6486	\$	73.41
85200289					580.4	EACH	\$	1.81	NO LEAD 87 OCT RFG - 11741816			
85200289										6486	\$	1,050.52
85200289					1	EACH	\$	101.69	FEDERAL AND STATE TAXES AND FEES - 11741816			
85200289										6486	\$	101.69
85200289					302.8	EACH	\$	2.12	#2 ULTRA LS DIESEL - 11741815			
85200289										6486	\$	641.94
85200289					1	EACH	\$	53.05	STATE AND FEDERAL TAXES AND FEES - 11741815			
85200289										6486	\$	53.05
85200315	12/09/2019	642477	ENERGY PETROLEUM COMPANY	400								
85200315					1600	EACH	\$	1.85	NO LEAD 87 OCT RFG - 6261204			
85200315										6486	\$	2,960.00
85200315					1	EACH	\$	280.32	FEDERAL AND STATE TAXES AND FEES - 6261204			
85200315										6486	\$	280.32
85200315					420	EACH	\$	1.85	NO LEAD 87 OCT RFG - 6261203			
85200315										6486	\$	777.00
85200315					1	EACH	\$	73.58	FEDERAL AND STATE TAXES AND FEES - 6261203			
85200315										6486	\$	73.58
85200326	01/02/2020	626035	HOME SERVICE OIL CO INC	400								
85200326					400.2	EACH	\$	1.94	RFG 87 OCT UNL REG			
85200326										6486	\$	776.39
85200326					1	EACH	\$	70.11	STATE AND FEDERAL TAXES AND FEES			
85200326										6486	\$	70.11
85200328	01/06/2020	915734	SIEVEKING INC.	400								
85200328					290.2	EACH	\$	1.79	353 N/L GASOHOL 87 OCTANE			
85200328										6486	\$	519.46
85200328					1	EACH	\$	4.80	FEDERAL AND STATE TAXES AND FEES ON 353 I			
85200328										6486	\$	4.80
85200328					1	EACH	\$	4.80	FEDERAL AND STATE TAXES AND FEES ON 353 I			
85200328										6486	\$	4.80
85200328					432.4	EACH	\$	1.85	353 N/L GASOHOL 87 OCTANE			

85200328									6486	\$	799.94
85200333	01/10/2020	642477	ENERGY PETROLEUM COMPANY	400							
85200333				500	EACH	\$	1.93	NO LEAD 87 OCT RFG			
85200333									6486	\$	965.00
85200333				1	EACH	\$	87.60	FEDERAL AND STATE TAXES AND FEES			
85200333									6486	\$	87.60
85200333				16.9	EACH	\$	2.26	#2 DIESEL ULTRA LS			
85200333				1	EACH	\$	2.96	FEDERAL AND STATE TAXES AND FEES			
85200333									6486	\$	38.19
85200333				350	EACH	\$	1.93	NO LEAD 87 OCT RFG			
85200333									6486	\$	2.96
85200333				1	EACH	\$	61.33	FEDERAL AND STATE TAXES AND FEES			
85200333									6486	\$	675.50
85200333				1	EACH	\$	61.33	FEDERAL AND STATE TAXES AND FEES			
85200333									6486	\$	61.33
85200333				300.1	EACH	\$	2.26	#2 ULTRA PREM LSD - DIESEL			
85200333									6486	\$	678.23
85200333				1	EACH	\$	52.58	STATE AND FEDERAL TAXES AND FEES			
85200333									6486	\$	52.58
85200335	01/22/2020	642477	ENERGY PETROLEUM COMPANY	400							
85200335				1200.3	EACH	\$	1.88	NO LEAD 87 OCT RFG			
85200335									6486	\$	2,256.56
85200335				1	EACH	\$	210.29	FEDERAL AND STATE TAXES AND FEES			
85200335									6486	\$	210.29
85200335				300.2	EACH	\$	1.91	#2 DIESEL ULTRA LS			
85200335									6486	\$	573.38
85200335				1	EACH	\$	52.59	FEDERAL AND STATE TAXES AND FEES			
85200335									6486	\$	52.59
85200335				420	EACH	\$	1.88	NO LEAD 87 OCT RFG			
85200335									6486	\$	789.60
85200335				1	EACH	\$	73.58	FEDERAL AND STATE TAXES AND FEES			
85200335									6486	\$	73.58
85200335				300.1	EACH	\$	2.26	#2 ULTRA PREM LSD - DIESEL			
85200335									6486	\$	678.23
85200335				1	EACH	\$	52.58	STATE AND FEDERAL TAXES AND FEES			
85200335									6486	\$	52.58
85200345	01/28/2020	642477	ENERGY PETROLEUM COMPANY	400							
85200345				1300.2	EACH	\$	1.77	NO LEAD 87 OCT RFG			
85200345									6486	\$	2,301.35
85200345				1	EACH	\$	230.30	FEDERAL AND STATE TAXES AND FEES			
85200345									6486	\$	230.30
85200345				420	EACH	\$	1.77	NO LEAD 87 OCT RFG			
85200345									6486	\$	743.40
85200345				1	EACH	\$	74.39	FEDERAL AND STATE TAXES AND FEES			
85200345									6486	\$	74.39



85200366	02/13/2020	642477	ENERGY PETROLEUM COMPANY	400							
85200366					980	EACH	\$	1.70	NO LEAD 87 OCT RFG		
85200366										6486	\$ 1,666.00
85200366					1	EACH	\$	173.59	FEDERAL AND STATE TAXES AND FEES		
85200366										6486	\$ 173.59
85200366					410.1	EACH	\$	1.70	NO LEAD 87 OCT RFG		
85200366										6486	\$ 697.17
85200366					1	EACH	\$	72.65	FEDERAL AND STATE TAXES AND FEES		
85200366										6486	\$ 72.65
85200366					1	EACH	\$	1.90	#2 ULTRA PREM LSD (SEASONAL)		
85200366										6486	\$ 1.90
85200366					1	EACH	\$	57.68	STATE AND FEDERAL TAXES AND FEES		
85200366										6486	\$ 57.68
85200374	02/21/2020	642477	ENERGY PETROLEUM COMPANY	400							
85200374					350	EACH	\$	1.71	NO LEAD 87 OCT RFG		
85200374										6486	\$ 599.55
85200374					1	EACH	\$	62.00	FEDERAL AND STATE TAXES AND FEES		
85200374										6486	\$ 62.00
85200374					800	EACH	\$	1.71	NO LEAD 87 OCT RFG		
85200374										6486	\$ 1,370.40
85200374					1	EACH	\$	141.70	FEDERAL AND STATE TAXES AND FEES		
85200374										6486	\$ 141.70
85200375	02/27/2020	626035	HOME SERVICE OIL CO INC	400							
85200375					600	EACH	\$	1.70	NO LEAD 87 OCT RFG		
85200375										6486	\$ 1,020.00
85200375					1	EACH	\$	106.30	FEDERAL AND STATE TAXES AND FEES		
85200375										6486	\$ 106.30
85200375					400.1	EACH	\$	1.70	NO LEAD 87 OCT RFG		
85200375										6486	\$ 680.17
85200375					1	EACH	\$	70.87	FEDERAL AND STATE TAXES AND FEES		
85200375										6486	\$ 70.87
85200386	03/05/2020	642477	ENERGY PETROLEUM COMPAI	400							
85200386					420.3	EACH		1.76	NO LEAD 87 OCT RFG		
85200386										6486	\$ 739.73
85200386					1	EACH		74.44	FEDERAL AND STATE TAXES AND FEES		
85200386										6486	\$ 74.44
85200386					1175	EACH		1.76	NO LEAD 87 OCT RFG		
85200386										6486	\$ 2,068.00
85200386					1	EACH		208.13	FEDERAL AND STATE TAXES AND FEES		
85200386										6486	\$ 208.13
85200386					200	EACH		1.77	#2 ULTRA PREM LSD		
85200386										6486	\$ 354.00
85200386					1	EACH		35.47	FEDERAL AND STATE TAXES AND FEES		
85200386										6486	\$ 35.47
85200401	03/24/2020	800559	KIESEL COMPANY	400							

85200401					1576.7	EACH		1.6 87 OCT 10% ETHANOL BLEND GASOLINE			
85200401									6486	\$	2,522.72
85200401					422.3	EACH		1.6 87 OCT 10% ETHANOL BLEND GASOLINE			
85200401									6486	\$	675.68
85200401					1	EACH		435.86 FEDERAL AND STATE TAXES AND FEES			
85200401									6486	\$	435.86
85200404	03/27/2020	642477	ENERGY PETROLEUM COMPAI	400							
85200404					423.2	EACH		1.1646 NO LEAD 87 OCT RFG			
85200404									6486	\$	492.86
85200404					1	EACH		74.96 FEDERAL AND STATE TAXES AND FEES			
85200404									6486	\$	74.96
85200404					1177.1	EACH		1.1646 NO LEAD 87 OCT RFG			
85200404									6486	\$	1,370.85
85200404					1	EACH		208.5 FEDERAL AND STATE TAXES AND FEES			
85200404									6486	\$	208.50
85200404					248.6	EACH		1.282 #2 ULTRA PREM LSD			
85200404									6486	\$	318.71
85200404					1	EACH		44.08 FEDERAL AND STATE TAXES AND FEES			
85200404									6486	\$	44.08
97200049	08/27/2019	800559	KIESEL COMPANY	500							
								PREMIUM ULTRA LOW SULFUR #2 DIESEL			
97200049					7500	EACH	\$	1.85 FUEL	6486	\$	13,867.50
97200049					7500	EACH	\$	0.00 FED OIL SPILL FEE	6486	\$	16.05
97200049					7500	EACH	\$	0.00 MO AGI TAX PER GAL EXTRA	6486	\$	7.50
97200049					7500	EACH	\$	0.17 MO STATE TAX PER GAL	6486	\$	1,275.00
97200049					7500	EACH	\$	0.00 MO ADG INSP. FEE TAX PER GAL	6486	\$	5.25
97200049											
97200049					7500	EACH	\$	0.00 MO USTD TRANSP. LOAD FEE TAX PER GAG	6486	\$	18.75
97200057	09/04/2019	800559	KIESEL COMPANY	500							
								PREMIUM ULTRA LOW SULFUR #2 DIESEL			
97200057					7500	EACH	\$	1.84 FUEL			
97200057									6486	\$	13,800.00
97200057					7500	EACH	\$	0.00 FED OIL SPILL FEE			
97200057									6486	\$	16.05
97200057					7500	EACH	\$	0.00 MO. AGI TAX PER GAL. EXTRA			
97200057									6486	\$	7.50
97200057					7500	EACH	\$	0.17 MO. STATE TAX PER GAL			
97200057									6486	\$	1,275.00
97200057					7500	EACH	\$	0.00 MO. ADG INSP. FEE TAX PER GAL			
97200057									6486	\$	5.25
97200057											
97200057					7500	EACH	\$	0.00 MO. USTD TRANSP. LOAD FEE TAX PER GAL			



97200066					7500	EACH	\$	0.00	MO USTD TRANSP LOAD FEE TAX PER GAL			
97200066										6486	\$	18.75
97200067	10/10/2019	642477	ENERGY PETROLEUM COMPANY	500								
97200067					7500	EACH	\$	2.00	PREMIUM ULTRA LOW SULFUR #2 DIESEL FUEL			
97200067										6486	\$	15,000.00
97200067					7500	EACH	\$	0.00	FED. OIL SPILL FEE			
97200067										6486	\$	16.05
97200067					7500	EACH	\$	0.00	MO AGI TAX PER GAL. EXTRA			
97200067										6486	\$	7.50
97200067					7500	EACH	\$	0.17	MO STATE TAX PER GAL			
97200067										6486	\$	1,275.00
97200067					7500	EACH	\$	0.00	MO ADG INSP. FEE TAX PER GAL			
97200067										6486	\$	5.25
97200067					7500	EACH	\$	0.00	MO. USTD TRANSP. LOAD FEE TAX PER GAL			
97200067										6486	\$	18.75
97200071	10/30/2019	626035	HOME SERVICE OIL CO INC	500								
97200071					7500	EACH	\$	1.98	PREMIUM, ULTRA LOW SULFUR #2 DIESEL FUEL			
97200071										6486	\$	14,850.00
97200071					7500	EACH	\$	0.00	FED. OIL SPILL FEE			
97200071										6486	\$	16.05
97200071					7500	EACH	\$	0.00	MO.AGI TAX PER GAL. EXTRA			
97200071										6486	\$	7.50
97200071					7500	EACH	\$	0.17	MO. STATE TAX PER GAL			
97200071										6486	\$	1,275.00
97200071					7500	EACH	\$	0.00	MO. ADG INSP. FEE TAX PER GAL			
97200071										6486	\$	5.25
97200071					7500	EACH	\$	0.00	MO. USTDTRANSP. LOAD FEE TAX PER GAL			
97200071										6486	\$	18.75
97200076	11/12/2019	642477	ENERGY PETROLEUM COMPANY	500								
97200076					7500	EACH	\$	2.04	PREMIUM ULTRA LOW SULFUR #2 DIESEL FUEL TREATED BID # 20P-62			
97200076										6486	\$	15,262.50
97200076					7500	EACH	\$	0.00	FED OIL SPILL FEE			
97200076										6486	\$	16.05
97200076					7500	EACH	\$	0.00	MO AGI TAX PER GAL EXTRA			
97200076										6486	\$	7.50
97200076					7500	EACH	\$	0.17	MO STATE TAX PER GALLON			
97200076										6486	\$	1,275.00
97200076					7500	EACH	\$	0.00	MO ADG INSP. FEE TAX PER GALLON			

97200076									6486	\$	5.25
97200076				7500	EACH	\$	0.00	MO USTD TRANSP. LOAD FEE TAX PER GALLON			
97200076									6486	\$	18.75
97200077	11/14/2019	642477	ENERGY PETROLEUM COMPANY	500							
97200077				7500	EACH	\$	2.09	PREMIUM ULTRA LOW SULFUR #2 DIESEL FUEL TREATED			
97200077									6486	\$	15,675.00
97200077				7500	EACH	\$	0.00	FED OIL SPILL FEE			
97200077									6486	\$	16.05
97200077				7500	EACH	\$	0.00	MO AGI TAX PER GAL. EXTRA			
97200077									6486	\$	7.50
97200077				7500	EACH	\$	0.17	MO STATE TAX PER GAL			
97200077									6486	\$	1,275.00
97200077				7500	EACH	\$	0.00	MO. ADG INSP. FEE TAX PER GAL			
97200077									6486	\$	5.25
97200077				7500	EACH	\$	0.00	MO. USTD TRANSP. LOAD FEE TAX PER GAL			
97200077									6486	\$	18.75
97200078	12/03/2019	642477	ENERGY PETROLEUM COMPANY	500							
97200078				7500	EACH	\$	1.92	PREMIUM ULTRA LOW SULFUR #2 DIESEL FUEL TREATED			
97200078									6486	\$	14,400.00
97200078				7500	EACH	\$	0.00	FED OIL SPILL FEE			
97200078									6486	\$	16.05
97200078				7500	EACH	\$	0.00	MO AGI TAX PER GAL EXTRA			
97200078									6486	\$	7.50
97200078				7500	EACH	\$	0.17	MO STATE TAX PER GAL			
97200078									6486	\$	1,275.00
97200078				7500	EACH	\$	0.00	MOADG INSP. FEE TAX PR GAL			
97200078									6486	\$	5.25
97200078				7500	EACH	\$	0.00	MO USTD TRANSP. LOAD FEE TAX PER GAL			
97200078									6486	\$	18.75
97200086	12/18/2019	626035	HOME SERVICE OIL CO INC	500							
97200086				7500	EACH	\$	1.92	PREMIUM ULTRA LOW SULFUR #2 DIESEL FUEL TREATED BID # 20P-79			
97200086									6486	\$	14,407.50
97200086				7500	EACH	\$	0.00	FED OIL SPILL FEE			
97200086									6486	\$	16.05
97200086				7500	EACH	\$	0.00	MO AGI TAX PER GAL. EXTRA			
97200086									6486	\$	7.50
97200086				7500	EACH	\$	0.17	MO.STATE TAX PER GAL			
97200086									6486	\$	1,275.00

97200086					7500	EACH	\$	0.00	MO.ADG INSP. FEE TAX PER GAL			
97200086										6486	\$	5.25
97200086					7500	EACH	\$	0.00	MO.USTD TRANSP. LOAD FEE TAX PER GAL.			
97200086										6486	\$	18.75
97200087	01/02/2020	626035	HOME SERVICE OIL CO INC	500								
97200087					7500	EACH	\$	1.98	PREMIUM ULTRA LOW SULFUR #2 DIESEL FUEL			
97200087										6486	\$	14,841.00
97200087					7500	EACH	\$	0.00	FED OIL SPILL FEE			
97200087										6486	\$	16.05
97200087					7500	EACH	\$	0.00	MO AGI TAX PER GAL EXTRA			
97200087										6486	\$	7.50
97200087					7500	EACH	\$	0.17	MO STATE TAX PER GAL			
97200087										6486	\$	1,275.00
97200087					7500	EACH	\$	0.00	MO ADG INSP FEE TAX PER GAL			
97200087										6486	\$	5.25
97200087					7500	EACH	\$	0.00	MO USTD TRANSP LOAD FEE TAX PER GAL			
97200087										6486	\$	18.75
97200094	01/21/2020	642477	ENERGY PETROLEUM COMPANY	500								
97200094					7500	EACH	\$	1.90	PREMIUM ULTRA LOW SULFUR #2 DIESEL FUEL			
97200094										6486	\$	14,250.00
97200094					7500	EACH	\$	0.00	MO.AGI TAX PER GAL. EXTRA			
97200094										6486	\$	7.50
97200094					7500	EACH	\$	0.17	MO STATE TAX PER GALLON			
97200094										6486	\$	1,275.00
97200094					7500	EACH	\$	0.00	MO ADG INSP. FEE TAX PER GAL			
97200094										6486	\$	5.25
97200094					7500	EACH	\$	0.00	MO. USTD TRANSP. LOAD FEE TAX PER GAL			
97200094										6486	\$	18.75
97200094					7500	EACH	\$	0.00	FED OIL SPILL FEE			
97200094										6486	\$	16.05
97200101	01/27/2020	642477	ENERGY PETROLEUM COMPANY	500								
97200101					7500	EACH	\$	1.83	PREMIUM ULTRA LOW SULFUR #2 DIESEL FUEL			
97200101										6486	\$	13,687.50
97200101					7500	EACH	\$	0.00	FED OIL SPILL FEE			
97200101										6486	\$	16.05
97200101					7500	EACH	\$	0.00	MO AGI TAX PER GAL. EXTRA			
97200101										6486	\$	7.50
97200101					7500	EACH	\$	0.17	MO STATE TAX PER GAL			
97200101										6486	\$	1,275.00
97200101					7500	EACH	\$	0.00	MO ADG INSP. FEE TAX PER GAL			
97200101										6486	\$	5.25
97200101					7500	EACH	\$	0.00	MO USTD TRANSP. LOAD FEE TAX PER GAL			

97200101									6486	\$	18.75
97200104	02/10/2020	642477	ENERGY PETROLEUM COMPANY	500							
97200104					7500	EACH	\$	1.68	PREMIUM ULTRAL LOW SULFUR #2 DIESEL FUE		
97200104									6486	\$	12,600.00
97200104					7500	EACH	\$	0.00	FED OIL SPILL FEE		
97200104									6486	\$	16.05
97200104					7500	EACH	\$	0.00	MO. AGI TAX PER GAL. EXTRA		
97200104									6486	\$	7.50
97200104					7500	EACH	\$	0.17	MO. STATE TAX PER GAL		
97200104									6486	\$	1,275.00
97200104					7500	EACH	\$	0.00	MO ADG INSP. FEE TAX PER GAL		
97200104									6486	\$	5.25
97200104					7500	EACH	\$	0.00	MO. USTD TRANSP. LOAD FEE TAX PER GAL		
97200104									6486	\$	18.75
97200105	02/19/2020	800559	KIESEL COMPANY	500							
97200105					7500	EACH	\$	1.66	PREMIUM ULTRA LOW SULFUR #2 DIESEL FUEL		
97200105									6486	\$	12,442.50
97200105					7500	EACH	\$	0.00	FED OIL SPILL FEE		
97200105									6486	\$	16.05
97200105					7500	EACH	\$	0.00	MO AGI TA PER GAL. EXTRA		
97200105									6486	\$	7.50
97200105					7500	EACH	\$	0.17	MO. STATE TAX PER GAL		
97200105									6486	\$	1,275.00
97200105					7500	EACH	\$	0.00	MO . ADG INSP. FEE TAX PER GAL		
97200105									6486	\$	5.25
97200105					7500	EACH	\$	0.00	MO. USTD TRANSP. LOAD FEE TAX PER GAL.		
97200105									6486	\$	18.75
97200110	02/27/2020	642477	ENERGY PETROLEUM COMPANY	500							
97200110					7500	EACH	\$	1.72	PREMIUM ULTRA LOW SULFUR # 2 DIESEL FUEI		
97200110									6486	\$	12,900.00
97200110					7500	EACH	\$	0.00	FED OIL SPILL FEE		
97200110									6486	\$	16.05
97200110					7500	EACH	\$	0.00	MO AGI TAX PER GAL. EXTRA		
97200110									6486	\$	7.50
97200110					7500	EACH	\$	0.17	MO STATE TAX PER GAL		
97200110									6486	\$	1,275.00
97200110					7500	EACH	\$	0.00	MO ADG INSP. FEE TAX PER GAL		
97200110									6486	\$	5.25
97200110					7500	EACH	\$	0.00	MO USTD TRANSP LOAD FEE TAX PER GAL		
97200110									6486	\$	18.75
97200124	03/11/2020	642477	ENERGY PETROLEUM COMPAI	500							
97200124					7500	EACH		1.61	PREMIUM ULTRA LOW SULFUR #2 DIESEL TREA		
97200124									6486	\$	12,075.00
97200124					7500	EACH		0.00214	FED OIL SPILL FEE		
97200124									6486	\$	16.05
97200124					7500	EACH		0.001	MO AGI TAX PER GAL. EXTRA		

97200124									6486	\$	7.50
97200124					7500	EACH		0.17 MO STATE TAX PER GAL			
97200124									6486	\$	1,275.00
97200124					7500	EACH		0.0007 MO ADG INSP. FEE TAX PER GAL			
97200124									6486	\$	5.25
97200124					7500	EACH		0.0025 MO USTD TRANSP. LOAD FEE TAX PER GAL			
97200124									6486	\$	18.75
85200193	08/22/2019	800066	INDUSTRIAL SOAP CO	401							
								TRASH CAN LINERS 40" X 48" - 16 MICRON HIGH DENSITY ONLY - CLEAR - STAR SEALED (250/CASE) APPROX CASE WGT: 21.6# #MR40483MC 50CASES PER PALLET			
85200193					400	EACH	\$	17.60	6411	\$	7,040.00
85200193											
85200233	09/23/2019	800066	INDUSTRIAL SOAP CO	401							
								#MR40483MC LARGE TRASH CAN LINERS 40" X 48" - 16 MICRON ONLY 50 CASES / PALLET HIGH DENSITY ONLY - CLEAR - STAR SEALED 250/CASE APPROX CASE WGT 21.6#			
85200233					400	EACH	\$	17.25	6411	\$	6,900.00
85200233											
85200234	09/23/2019	914674	UNIPAK CORP.	401							
								#24R UPC SMALL TRASH CAN LINERS 24" X 23" - 0.4 MIL LINEAR LOW DENSITY ONLY - CLEAR STAR SEALED - 1000 / CASE APPROX. CASE WGT: 15.2#			
85200234					200	EACH	\$	14.50	6411	\$	2,900.00
85200234											
85200293	11/22/2019	800066	INDUSTRIAL SOAP CO	401							
85200293					400	EACH	\$	17.25			
								40" X 48" - 16 MICRON - HIGH DENSITY ONLY CLEAR STAR SEALED (250/CASE) APPROX. CASE WGT : 21.6# PITT PLASTIC #MR40483MC 50 CASES / PALLET ONLY	6411	\$	6,900.00
85200293											
85200298	11/22/2019	914674	UNIPAK CORP.	401							
85200298					800	EACH	\$	9.67			
								33" X 39" - 1.3 MIL LINEAR LOW DENSITY ONLY CLEAR - STAR SEALED - (100/CASE) APPROX CASE WGT: 11.15# UPC #4013 100CASES / PALLET	6411	\$	7,736.00
85200298											
85200400	03/20/2020	914674	UNIPAK CORP.	401							



85200400				500	EACH			16.9 TRASH CAN LINERS - 40" X 48" - 16 MICRON					
85200400									6411	\$	8,450.00		
81200026	07/03/2019	913529	VACCARO & SONS PRODUCE	700	1	EACH	\$	9,850.00	BLANKET PO	6471	\$	9,850.00	
81200040	11/12/2019	913529	VACCARO & SONS PRODUCE	700	1	EACH	\$	26,000.00	BLANKET PO				
81200040										6471	\$	26,000.00	
81200045	02/10/2020	913529	VACCARO & SONS PRODUCE	700									
81200045					1	EACH	\$	9,000.00	BLANKET PO				
81200045										6471	\$	9,000.00	
81200048	03/04/2020	913425	SUNFARM	700									
81200048					1	EACH		26000	BLANKET PO				
81200048										6471	\$	26,000.00	
										<b>Total Commodity 202 (Paper)</b>		\$	165,311.60
										<b>Total Commodity 400 (Fuel - Facilities)</b>		\$	81,285.56
										<b>Total Commodity 500 (Fuel - Transportation)</b>		\$	278,367.90
										<b>Total Commodity 401 (Trash Liners)</b>		\$	39,926.00
										<b>Total Commodity 700 (Produce)</b>		\$	<u>70,850.00</u>
										<b>Grand Total All Commodity</b>		\$	<b>635,741.06</b>